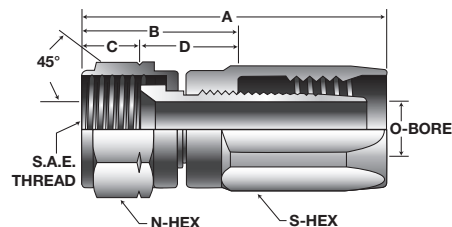
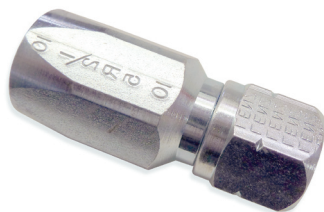


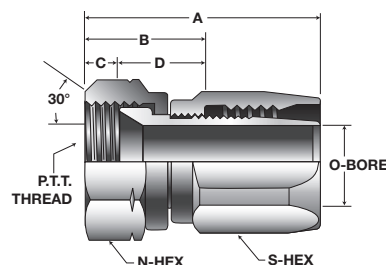
FS
101 S.A.E.
SWIVEL HOSE FITTING
 MANDREL TYPE/ZINC PLATED STEEL



100R5 PART NO.	HOSE SIZE	O. D. TUBE SIZE	S.A.E. THREAD	FITTINGS NIPPLE	COMP. NUT	PARTS SOCKET	EA. WEIGHT	A	B	C	INCH D	N HEX	O	S HEX
101-4	4	1/4	7/16"-20	4101-4	4213-4	4011-4	0.08	1.75	1.00	0.34	0.64	9/16	0.17	5/8
101-5	5	5/16	1/2"-20	4101-5	4213-5	4011-5	0.1	1.88	1.09	0.41	0.69	5/8	0.23	11/16
101-6	6	3/8	5/18"-18	4101-6	4213-6	4011-6	0.15	2.03	1.13	0.41	0.72	3/4	0.30	13/16
101-8	8	1/2	3/4"-16	4101-8	4213-8	4011-8	0.24	2.50	1.25	0.53	0.72	7/8	0.39	15/16
101-10	10	5/8	7/8"-14	4101-10	4213-10	4011-10	0.35	2.78	1.39	0.58	0.81	1	0.48	1 1/8
101-12	12	3/4	1 1/16"-14	4101-12	4213-12	4011-12	0.46	3.13	1.58	0.58	1.00	1 1/4	0.61	1 1/4

For hose information see page 2f
 FS code letters when used on assembly

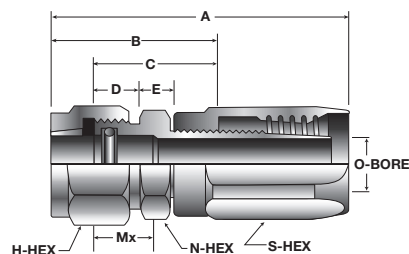
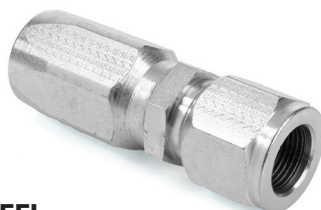
PS
106 P.T.T.
SWIVEL HOSE FITTING
 MANDREL TYPE/ZINC PLATED STEEL



100R5 PART NO.	HOSE SIZE	O. D. TUBE SIZE	P.T.T. THREAD	FITTINGS NIPPLE	COMP. NUT	PARTS SOCKET	EA. WEIGHT	A	B	C	INCH D	N HEX	O	S HEX
106-16	16	1	1 5/16-14	4106-16	4213-16	4011-16	0.59	2.59	1.33	0.39	0.94	1 1/2	0.81	1 7/16
106-20	20	1 1/4	1 5/8-14	4106-20	4213-20	4011-20	1.05	2.92	1.56	0.58	0.98	2	1.05	1 3/4
106-24	24	1 1/2	1 7/8-14	4106-24	4213-24	4011-24	1.28	3.23	1.80	0.70	1.09	2 1/4	1.28	2
106-32	32	2	2 1/2-12	4106-32	4205-32	4011-32	2.18	4.00	2.16	0.92	1.23	2 7/8	1.75	2 1/2

For hose information see page 2f
 PS code letters when used on assembly

LT
116 O-RING SEAL TUBE
HOSE FITTING END MALE
 LT MANDREL TYPE/ZINC PLATED STEEL



100R5 PART NO.	HOSE SIZE	O. D. TUBE SIZE	FITTINGS COMP. NIPPLE	PARTS SOCKET	EA. WEIGHT	A	B	C	INCH D	E	H HEX	MX	N HEX	O	S HEX
116-4	4	1/4"	4116-4	4011-4	0.11	2.00	1.25	0.94	0.41	0.19	5/8	0.47	1/2	0.17	5/8
116-5	5	5/16	4116-5	4011-5	0.13	2.09	1.31	1.00	0.41	0.19	11/16	0.47	9/16	0.23	11/16
116-6	6	3/8"	4116-6	4011-6	0.17	2.33	1.44	1.13	0.47	0.25	3/4	0.56	5/8	0.30	13/16
116-8	8	1/2	4116-8	4011-8	0.34	2.88	1.63	1.19	0.53	0.25	1	0.63	7/8	0.39	15/16
116-10	10	5/8	4116-10	4011-10	0.46	3.23	1.81	1.31	0.59	0.31	1 1/8	0.69	1	0.48	1 1/8
116-12	12	3/4	4116-12	4011-12	0.66	3.67	2.08	1.55	0.69	0.33	1 1/4	0.75	1 1/8	0.61	1 1/4
116-16	16	1	4116-16	4011-16	0.95	3.44	2.14	1.52	0.75	0.38	1 5/8	0.88	1 1/2	0.81	1 7/16
116-20	20	1 1/4	4116-20	4011-20	1.62	3.84	2.45	1.70	0.88	0.44	2	1.16	1 3/4	1.05	1 3/4
116-24	24	1 1/2	4116-24	4011-24	2.01	4.16	2.73	1.80	0.88	0.53	2 1/4	1.22	2	1.28	2
116-32	32	2	4116-32	4011-32	3.20	5.06	3.19	2.03	1.00	0.63	3	1.31	2 5/8	1.75	2 1/2

For hose information see page 2f
 Code letters when used on an assembly It