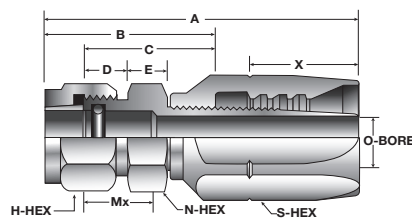
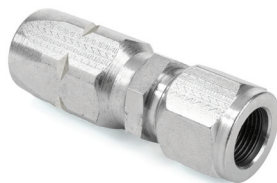




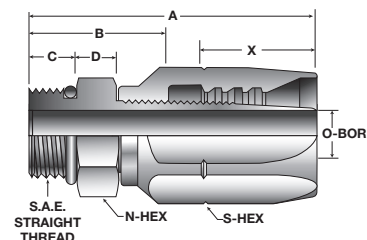
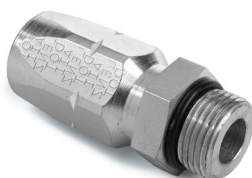
LT
216 O-RING SEAL
SKIVE/ZINC PLATED STEEL



LT 100R2A PART NO.	HOSE SIZE	O. D. TUBE SIZE	FITTINGS COMP. NIPPLE	PARTS SOCKET	EA. WEIGHT	A	B	C	D	E	H*	MX	N HEX	O	S HEX	X
216-4	4	1/4	4216-4-4	4022-4	0.23	2.67	1.44	1.13	0.41	0.22	0.63	0.5	0.56	0.18	0.81	0.91
216-6	6	3/8	4216-6-6	4022-6	0.36	2.98	1.53	1.22	0.49	0.28	0.75	0.63	0.69	0.30	1.00	1.28
216-8-6	6	1/2	4216-8-6	4022-6	0.39	3.47	1.78	1.31	0.53	0.31	1.00	0.89	0.88	0.30	1.00	1.28
216-8	8	1/2	4216-8-8	4022-8	0.56	3.88	1.81	1.34	0.53	0.31	1.00	0.69	0.88	0.38	1.13	1.25
216-10-8	8	5/8	4216-10-8	4022-8	0.61	3.53	1.94	1.44	0.59	0.34	1.13	0.75	1.00	0.38	1.13	1.25
216-12	12	3/4	4216-12	4022-12	1.0	4.13	2.22	1.66	0.69	0.38	1.25	0.88	1.13	0.59	1.50	1.41
216-16	16	1	4216-16	4022-16	1.8	4.75	2.72	2.09	0.75	0.44	1.63	0.88	1.50	0.81	1.75	1.63
216-20	20	1 1/4	4216-20	4022-20	3	5.58	3.25	2.47	0.88	0.50	2.00	1.16	1.75	1.05	2.25	2.09
216-24	24	1 1/2	4216-24	4022-24	3.5	5.84	3.53	2.66	0.88	0.63	2.25	1.22	2.00	1.28	2.50	1.81
216-32	32	2	4216-32	4022-32	6.6	6.59	3.88	2.75	1.0	0.63	3.00	1.13	2.63	1.75	3.00	2.41

For Hose Information See Page 15f

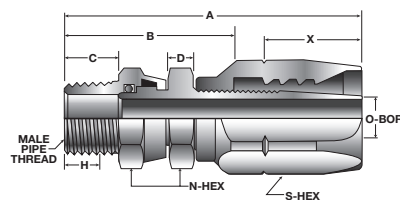
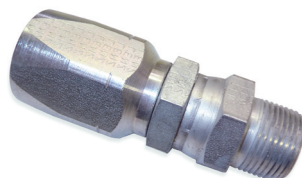
ST
218 S.A.E. MALE ORING
SKIVE/ZINC PLATED STEEL



100R5 PART NO.	HOSE SIZE	O. D. TUBE SIZE	MALE SAE THREAD	FITTINGS COMP. PARTS		EA. WEIGHT	A	B	C	D	NIPPLE HEX N	O	SOCKET S HEX	X
				NIPPLE	SOCKET									
218-4-4	4	1/4	7/16-20	4218-4-4	4022-4	0.20	2.34	1.11	0.36	0.25	9/16	0.17	13/16	0.91
218-6-6	6	3/8	9/16-18	4218-6-6	4022-6	0.32	2.61	1.16	0.39	0.30	11/16	0.30	1	1.28
218-8-6	6	1/2	3/4-16	4218-8-6	4022-8	0.33	2.69	1.22	0.44	0.31	7/8	0.30	1	1.28
218-8-8	8	1/2	3/4-16	4218-8-8	4022-8	0.47	2.84	1.30	0.44	0.34	7/8	0.38	1 1/8	1.25
218-10-8	8	5/8	7/8-14	4218-10-8	4022-8	0.50	2.94	1.39	0.50	0.38	1	0.38	1 1/8	1.25
218-12	12	3/4	1 1/16-12	4218-12	4022-12	0.96	3.50	1.59	0.59	0.41	1 1/4	0.59	1 1/2	1.41
218-16	16	1	1 5/16-12	4218-16	4022-16	1.55	3.95	1.91	0.59	0.41	1 1/2	0.81	1 3/4	1.63
218-20	20	1 1/4	1 5/8-12	4218-20	4022-20	2.46	4.52	2.19	0.59	0.50	1 7/8	1.05	2 1/4	2.09
218-24	24	1 1/2	1 7/8-12	4218-24	4022-24	2.94	4.63	2.31	0.59	0.63	2 1/8	1.28	2 1/2	1.94

For Hose Information See Page 15f

UP
219 UNION MALE PIPE
SKIVE/ZINC PLATED STEEL



100R2A PART NO.	HOSE SIZE	O. D. TUBE SIZE	MALE SAE THREAD	FITTINGS COMP. PARTS		EA. WEIGHT	A	B	C	D	H	NIPPLE N HEX	O	S HEX	X
				NIPPLE	SOCKET										
219-4-4	4	1/4	1/4	4219-4-4	4022-4	0.25	3.03	1.95	0.56	0.20	0.38	5/8	0.17	13/16	0.91
219-6-6	6	3/8	3/8	4219-6-6	4022-6	0.41	3.44	1.98	0.56	0.28	0.41	13/16	0.30	1	1.28
219-8-8	8	1/2	1/2	4219-8-8	4022-8	0.61	3.75	2.23	0.75	0.30	0.30	1	0.38	1 1/8	1.25
219-12-12	12	3/4	3/4	4219-12-12	4022-12	1.11	4.47	2.59	0.75	0.38	0.38	1 1/4	0.59	1 1/2	1.41
219-16-16	16	1	1	4219-16-16	4022-16	1.95	5.25	3.20	0.94	0.38	0.38	1 1/2	0.81	1 3/4	1.63

For Hose Information See Page 15f

*H Hand Engagement Plus One Full Thread