



High Pressure SERIES

Carbon Steel Body Zinc Plated (1/4" - 1 1/4" Port Sizes)

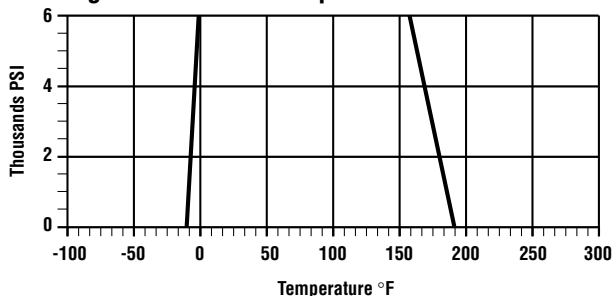
- Forged Body (1 1/2", 2 Port sizes)
- Full Port Sizes
- Hard Chrome Plated Steel Ball
- Delrin +MoS2 Ball Seals
- Viton "O"-Ring
- NPT, SAE
- Operating Pressures to 7250 PSI (500 Bar) see chart
- Operating Temperature -20° F to 212° F (-12° C to 100° C)

Options

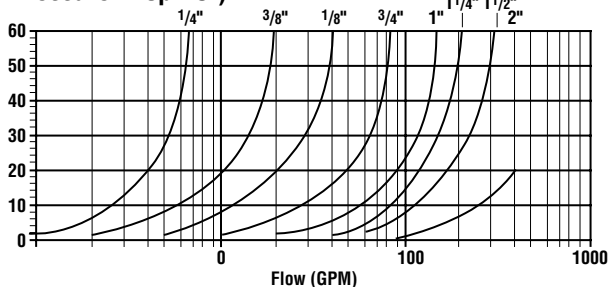
- Lock Kits
- Stainless Steel
- Temperature Range -60° F to 400° F (-50 C to 200 C depending upon seal material)



Working Pressure and Temperature

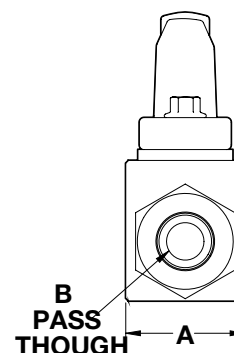


Pressure Drop PSI

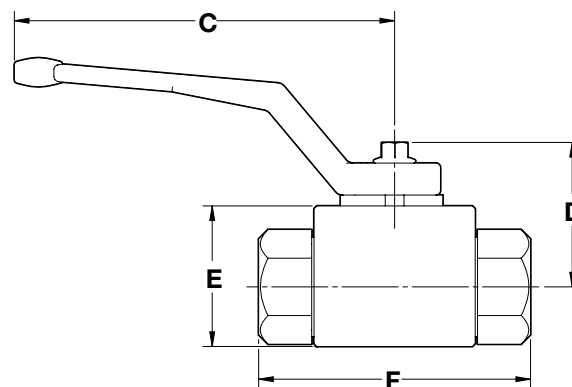


Dimensional Detail

MODEL NUMBER	SAE MODEL	PORT SIZE	WORKING PRESSURE		A	B	C	D	E	F	WEIGHT LBS/KG
LHBV-4	LBVA-4	1/4"	7350	IN	1"	0.2"	4.6"	1.2"	1.3"	2.7"	0.8"
				MM	10	5	24	30	80	44	0.4
LHBV-6	LBVA-6	3/8"	7350	IN	1.3"	0.4"	4.6"	1.2"	1.5"	3.1"	1.1"
				MM	10	10	24	30	80	44	0.5
LHBV-8	LBVA-8	1/2"	7350	IN	1.4"	0.5"	4.6"	1.2"	1.6"	4.1"	1.4"
				MM	15	13	31	30	80	51	0.6
LHBV-12	LBVA-12	3/4"	5880	IN	1.9"	0.8"	7.2"	1.8"	2.2"	4.3"	3.3"
				MM	20	20	37	46	113	57	1.5
LHBV-16	LBVA-16	1"	5145	IN	2.3"	0.9"	7.2"	2"	2.6"	4.6"	4.4"
				MM	25	23	45	51	113	70	2
LHBV-20	LBVA-20	1 1/4"	5145	IN	3"	0.9"	8.5"	2.5"	3.3"	4.3"	4.6"
				MM	32	23	57	64	138	81	2.1
LHBV-24	LBVA-24	1 1/2"	5145	IN	3.6"	0.9"	8.5"	2"	3.9"	5.1"	13"
				MM	40	23	70	51	138	94	5.9
LHBV-32	LBVA-32	2"	6175	IN	4.2"	0.9"	8.5"	2.9"	4.4"	5.5"	19"
				MM	45	23	84	74	157	112.5	8.6



REPLACEMENT HANDLES	Size	REPLACEMENT SEALS	LOCKING KITS
BVH-4	1/4"	BVH-SK-4	LK-1
BVH-6	3/8"	BVH-SK-6	LK-1
BVH-8	1/2"	BVH-SK-8	LK-1
BVH-12	3/4"	BVH-SK-12	LK-2
BVH-16	1"	BVH-SK-16	LK-2
BVH-20	1 1/4"	BVH-SK-20	LK-2
BVH-24	1 1/2"	BVH-SK-24	LK-3
BVH-32	2"	BVH-SK-32	LK-3



See website technical bulletin TB.TA05.708 for further information at (Technical Data - www.lenzinc.com).