



## EPA Sealed Emissions Caps & Necks

### Model FC Cap & FN Series necks

- EPA carb compliant
- Anti-splash self closing flap on fuel neck available
- Tethered audible cap FC-1 SAE J1114 threads
- Tested to a positive 3.5 PSIG (24.5 KPA) or vacuum pressure of .1 PSIG (.7 KPA)
- No need to change the cutout openings in your fuel tank

#### Option

- Diesel version with open bottom available

### Weld Neck Models

FN270 Diesel

FN270-FL (Flapper) Fuel

### Weld Neck Models

FN3HN Diesel

FN3HN-FL (Flapper) Fuel

FL suffix specifies Neck with Fuel Insert



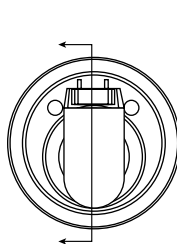
FC-1 &  
FN-270-FL



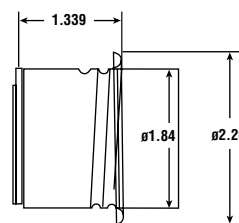
FN-3HN-FL



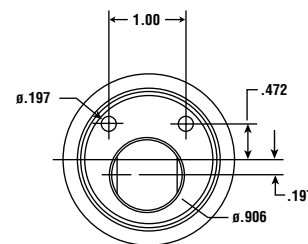
FN-3HN-FL



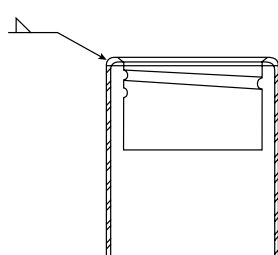
(FL) Fuel Insert  
(Bottom)



(FL) Fuel Insert  
(Side View)

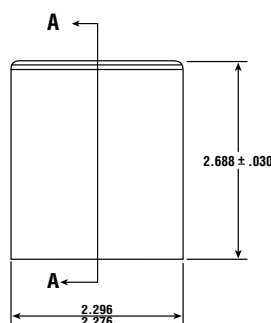


(FL) Fuel Insert  
(Top)

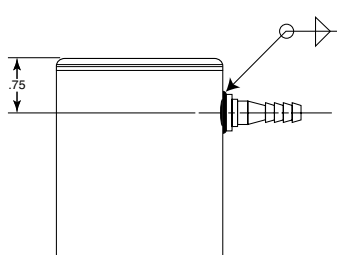


Section A-A

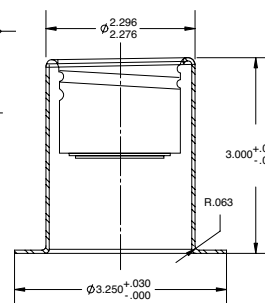
FN270-FL



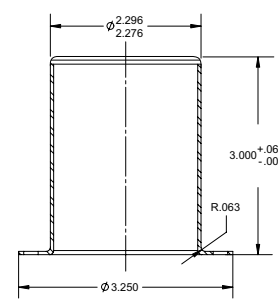
FN270



FN270-FL-OF  
FN270-OF



FN3HN-FL



FN3HN

## CARB (California Air Resource Board) SORE (Small Off-Road Engine) regulations Fuel Cap Performance Standards 40CFR 1060.245

- Fuel cap must be permanently tethered to the tank, equipment, or engine
- Fuel cap must be designed to provide physical and/or audible feedback to the user that a fuel tank vapor seal is established.
- Use a tethered or self closing gas cap on a fuel tank that stays sealed up to a positive pressure of 3.5 PSI or vacuum pressure of 1 PSI.
- The FC-1 tethered fuel cap has a low permeation seal gasket which threads unto FN series necks and these two components become a part of the customer's C.A.R.B. tank system certification.
- The FN270-OF series of necks has 1/4" hose barb stem provision for adding hose for a carbon canister or other device.