



Canister Filter

Return Line Applications

CP-250, 380, CPA-380

Specifications

- Working pressure 200 P.S.I. (14 Bar) 80 PSI ΔP w/o bypass
- Operating Temperatures -25° F to +212° F (-32° C to +100° C)
- Flows to 7 GPM (26 LPM) Return
- Flows to 2 GPM (7 LPM) Suction
- Die Cast Aluminum casting
- Buna Seals
- Compatible with mineral oils HH, HL, HM, HR, HV, HG according to ISO 6743/4
- Maximum pressure differential 80 P.S.I. (5 Bar)
- Bypass in filter elements
- .90 lbs shipping weight

Options

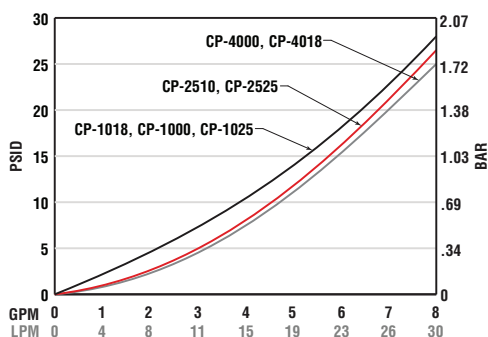
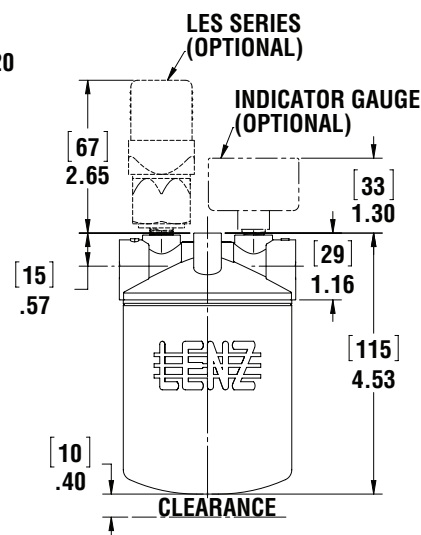
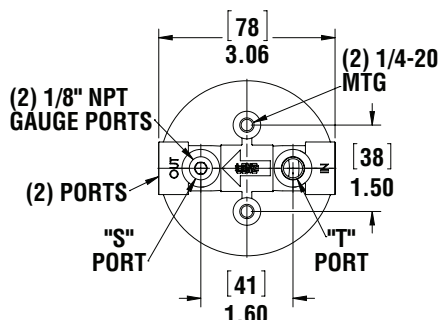
- NPT or SAE ports
- Indicator ports
- 10, 25, 40 micron elements
- 0, 18, 25 P.S.I.D. Bypass options



CP-250, CP-380
CPA-380



CP-1018



Temperature 100° F Viscosity 150 SUS
Average pressure drop through clean assembly

Filter Head Ordering Code

HEAD	PORT
CP-251	1/4" NPT
CP-381	3/8" NPT
CPA-381	9/16"-18 SAE

Assembly Ordering Code

CPA - 380 - 1018 - *

SERIES	ELEMENTS	INDICATOR PORTS
CP NPT	1000 10 MIC. NO BYPASS	OMIT NONE
CPA SAE	1018 10 MIC. 18 P.S.I. BYPASS	T 1/8 NPT RETURN
	1025 10 MIC. 25 P.S.I. BYPASS	S 1/8 NPT SUCTION
	2510 25 MIC. 10 P.S.I. BYPASS	
	2525 25 MIC. 25 P.S.I. BYPASS	
	4000 40 MIC. NO BYPASS	
	4018 40 MIC. 18 P.S.I. BYPASS	

For indicators see page 34a-35a

See Technical Bulletin TB.FIL04.708, TB.FIL11.708, TB.FIL13.708, TB.FIL16.708, for further information at (Technical Data – www.lenzinc.com)

Replacement Elements

MODEL	MICRON	BYPASS	AVG	AREA	AREA	ELEMENT	DIRT HOLDING CAPACITY
NUMBER	RATING	BETA	IN2	CM2	THREAD		6
CP-1000	10	NONE	2	126	818	3/4"-16 UNF	6
CP-1018	10	18	2	113	733	3/4"-16 UNF	6
CP-1025	10	25	2	113	733	3/4"-16 UNF	6
CP-2510	25	10	2	129	838	3/4"-16 UNF	6
CP-2525	25	25	2	129	838	3/4"-16 UNF	6
CP-4000	40	NONE	2	126	838	3/4"-16 UNF	6
CP-4018	40	18	2	126	818	3/4"-16 UNF	6



2" Diameter Filter Indicating Gauges



MC-12

Return Line Indicating Gauge
for 15 P.S.I. Filter Applications
2" Multi color

0-12 P.S.I. Green
12-15 P.S.I. Yellow
15-60 P.S.I. Red (Service Filter)
(To be used with "T" Indicator Port Location)



MC-20

Return Line Indicating Gauge
for 25 P.S.I. Filter Applications
2" Multi color

0-20 P.S.I. Green
21-24 P.S.I. Yellow
25-60 P.S.I. Red (Service Filter)
(To be used with "T" Indicator Port Location)



CHANGE FILTER

CP-2

Compound Indicating Gauge
(Suction or Return Line)

10" to 30" Vacuum is a Red Danger Area.
0-60 PSI
A Red "Change Filter" Sticker for the
Pressure side is included with each gauge
for application after the pressure factor
is determined.
(To be used with "T" or "S" Indicator Port Location)



GLY-MC-20

Glycerin Filled
Return Line Indicating Gauge
for 25 P.S.I. Filter Applications
2" Multi color

0-20 P.S.I. Green
21-24 P.S.I. Yellow
25-60 P.S.I. Red (Service Filter)
(To be used with "T" Indicator Port Location)



135080

Suction Line Indicating Gauge for
5 P.S.I. vacuum filter application
2" Multi color

0-9" HG Green
9-11" HG Yellow
11-30" HG Red (Service Filter)
(To be used with "S" Indicator Port Location)



VAC-3-20

Suction Line Indicating Gauge
for 3 P.S.I. vacuum filter applications
2" Multi color

0-3" HG Green
4-6" HG Yellow
6-30" HG Red (Service Filter)
(To be used with "S" Indicator Port Location)



Differential Indicator DP-75

Simple differential sliding
indicator which changes from
green to red at 7 P.S.I.D.

0 - 7 P.S.I.D. Green Clean
7 - 10 P.S.I.D. Red Service Filter
CP Series (500, 750, 1010, 1280,
1580)



Electrical Filter Indicators

Field Adjustable

Specifications:

- 1/8 NPT connection
- 3 AMP 12/24 VDC, 125/250 VAC IP67
- +/- 2% repeatability of full set point range @ 70° F
- Operating temperature 40°F to +250°F (-40°C to 121°C)
- 1,000,000 cycles mechanical range
- Maximum pressure 500 (25 BAR) PSI
- Steel housing, zinc plated
- Buna N diaphragm
- SPDT snap action switch

Options:

- EPDM seals -10°F – 250°F (-23°C – 121°C)
- Viton seals 0 – 250°F (-18°C – 121°C)
- Flying leads

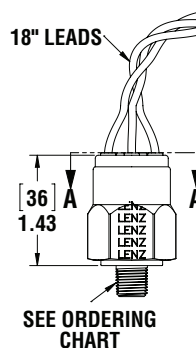
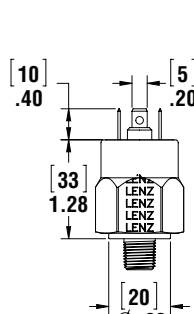
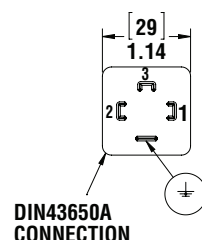
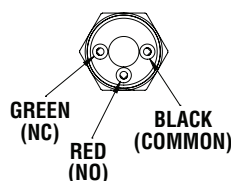
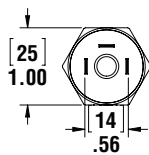


LES-FL

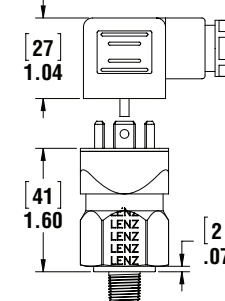


LES-HC

MODEL	ADJUSTMENT RANGE	AVERAGE DIFFERENTIAL	SET PRESSURE
P1	3-20 PSI (.2-1.4 BAR)	2-5 PSI (.13-0.4 BAR)	15 PSI
P2	15-80 PSI (1.03-6 BAR)	4-7 PSI (.27-0.5 BAR)	22 PSI
V1	5-28 IN Hg (160-948mb)	2-4 INHg (67-135mb)	5 Hg



LES-FL



LES-HC

Switch Ordering Code

LES — P1 — 2N — B — HC —

SERIES	ADJUSTMENT RANGE	THREAD	SEALS	ELECTRICAL CONNECTION	OPTIONS
LES	P1 3-20 PSI P2 15-80 PSI V1 5-30" HG RISING	2N 1/8" NPT 4N 1/4" NPT 4S 7/16"-20 6S 9/16"-18	B Buna V Viton E EPDM	FL FLYING LEADS HC DIN CLAMP	OMIT SS STAINLESS HOUSING IL IND LIGHT

Switch can be used in AC or DC Service.
For other options consult factory.

See Technical Bulletin TB.FIL23.912, or further information at
(Technical Data – www.lenzinc.com)