



WF, WFA Weld Flanges

- Forged steel construction (AISI 1018-AISI 1020)
- Zinc Black Phosphate finish makes them suitable for welding
- Flanged pilot design makes for easy installation
- -4 to -48 SAE O-Ring port ensures leak proof protection
- 1/8" -4" NPT threads available
- WF-SS-* or WFA-SS-* 304 stainless steel
- AA6351-T6 Aluminum WF-AL, WFA-AL



Stainless Steel



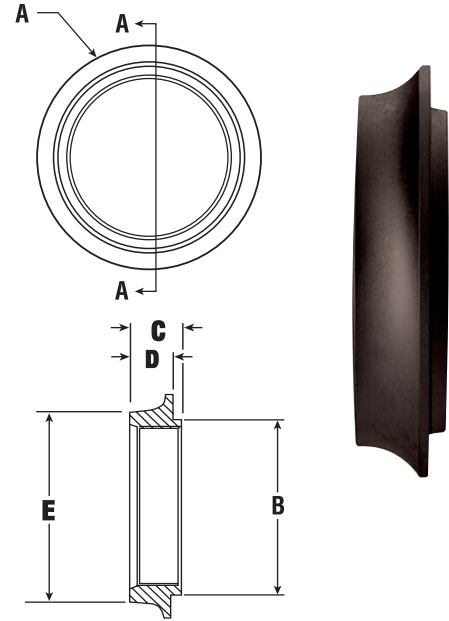
Steel



Aluminum

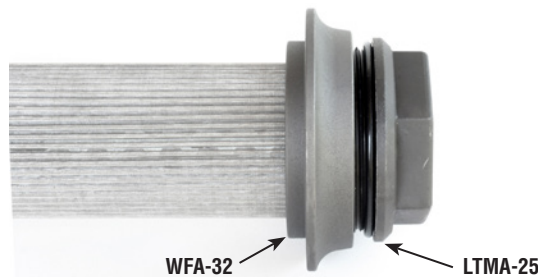
Dimensional Details

SAE Model	SAE Port	NPT Model	NPT Port		A	B	C	D	E
		WF-2	1/8"	in	1	0.59	0.55	0.25	0.59
				mm	25.40	15.0	14.0	6.4	15.0
WFA-4	7/16-20	WF-4	1/4"	in	1.5	0.93	0.56	0.31	1
				mm	38.10	23.62	14.22	7.87	25.40
WFA-5	1/2-20			in	1.5	0.93	0.56	0.31	1
				mm	38.10	23.62	14.22	7.87	25.40
WFA-6	9/16-18	WF-6	3/8"	in	1.5	0.93	0.56	0.31	1
				mm	38.10	23.62	14.22	7.87	25.40
WFA-8	3/4-16	WF-8	1/2"	in	1.5	0.93	0.56	0.31	1
				mm	38.10	23.62	14.22	7.87	25.40
WFA-10	7/8-14			in	2.13	1.38	0.69	0.44	1.44
				mm	54.10	35.05	17.53	11.18	36.58
WFA-12	1 1/16-12	WF-12	3/4"	in	2.13	1.38	0.69	0.44	1.44
				mm	54.10	35.05	17.53	11.18	36.58
WFA-14	1 3/16-12			in	2.38	1.66	0.75	0.5	1.75
				mm	60.45	42.16	19.05	12.70	44.45
WFA-16	1 5/16-12	WF-16	1"	in	2.38	1.66	0.75	0.5	1.75
				mm	60.45	42.16	19.05	12.70	44.45
WFA-20	1 5/8-12	WF-20	1 1/4"	in	2.69	2	0.75	0.5	2.13
				mm	68.33	50.80	19.05	12.70	54.10
WFA-24	1 7/8-12	WF-24	1 1/2"	in	3	2.25	0.75	0.5	2.38
				mm	76.20	57.15	19.05	12.70	60.45
WFA-32	2 1/2-12	WF-32	2"	in	3.5	2.63	0.86	0.6	2.88
				mm	88.90	66.80	21.84	15.24	73.15
		WF-40	2 1/2"	in	4.63	3.66	1	0.81	3.94
				mm	117.60	92.96	25.4	20.57	100.08
WFA-48	3 3/8-12	WF-48	3"	in	4.63	3.66	1	0.81	3.94
				mm	117.60	92.96	25.4	20.57	100.08
WFA-54	3 3/4-12			in	4.88	4.04	1	0.81	4.33
				mm	123.95	102.62	25.4	20.57	109.98
		WF-64	4"	in	5.71	4.61	1.06	0.86	4.92
				mm	145.03	117.09	26.9	21.84	125.0



1/8" NPT & 2-1/2" NPT are special order in Stainless Steel and Aluminum - Consult factory

The "rule of thumb" we use is +.020 for punched holes and +.040 for water jet-laser cut holes. Some holes may actually deviate from this recommendation if the tolerance is close enough to a standard punch you may have in your tool room.

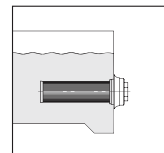
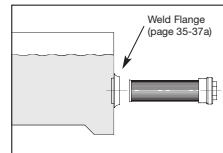


Ordering Code NPT, SAE Flanges

WF - 8 - N - SS

Series		Port	Thread		Material	
WFA	SAE	*2	Omit	SAE	Omit	Steel
WF	NPT	4	N	NPT	SS	Stainless Steel
		*5			AL	Aluminum

*SAE Threads Only
*NPT Threads Only



Mounting Details: Mount through sidewall or through tank top and into standpipe.

See Technical Bulletin TB.FIL24.1212, or further information at (Technical Data - www.lenzinc.com)