



EPA Sealed Emission Caps

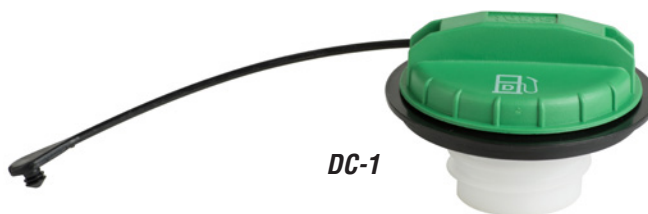
Model FC, DC Caps

Specifications

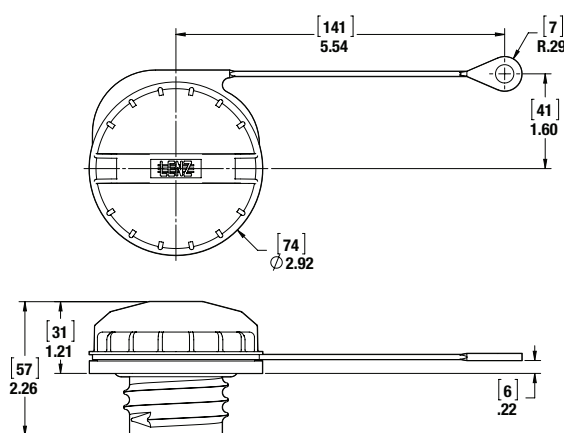
- EPA carb compliant
- Anti-splash self closing flap on fuel neck available
- Tethered audible cap FC-1 SAE J1114 threads
- Tested to a positive 3.5 PSIG (24.5 KPA) or vacuum pressure of .1 PSIG (.7 KPA)
- No need to change the cutout openings in your fuel tank



FC-1



DC-1



CARB (California Air Resource Board) SORE (Small Off-Road Engine) regulations Fuel Cap Performance Standards 40CFR 1060.245

- Fuel cap must be permanently tethered to the tank, equipment, or engine
- Fuel cap must be designed to provide physical and/or audible feedback to the user that a fuel tank vapor seal is established.
- Use a tethered or self closing gas cap on a fuel tank that stays sealed up to a positive pressure of 3.5 PSI or vacuum pressure of .1 PSI.
- The FC-1, DC-1 (ST-801 NYLON) tethered fuel caps have a low permeation Viton seal gasket which threads unto FN series necks and these two components become a part of the customer's C.A.R.B. tank system certification.