



## Hydraulic Filler Necks

LENZ Hydraulic Filler Caps & Necks are fabricated of heavy gauge steel with an optional stainless steel screen. Caps are available in standard or lockable, non-vented or vented.

### Hydraulic Fill Necks

#### HYD Series-Hydraulic Applications

- 16 gauge (.060") steel not plated
- Tube extension .12" wall thickness, 2.21" diameter
- Standard 1.3", 3", 6" & 8" length tube extension
- Tube extension not plated / Safety chain standard on cap
- SAE J829 Mounting Flange

#### Options

- Stainless steel, aluminum available (25 Piece Minimum)
- Angle tube cutoffs / lockable tab available
- Stainless steel screen std. 4.5" 40 mesh
- Overflow tube available
- Threaded & flanged connection available
- SR option is neck with screen retainer, to allow neck to be welded, order screen separately if required
- 4.5 option the screen is assembled to the neck



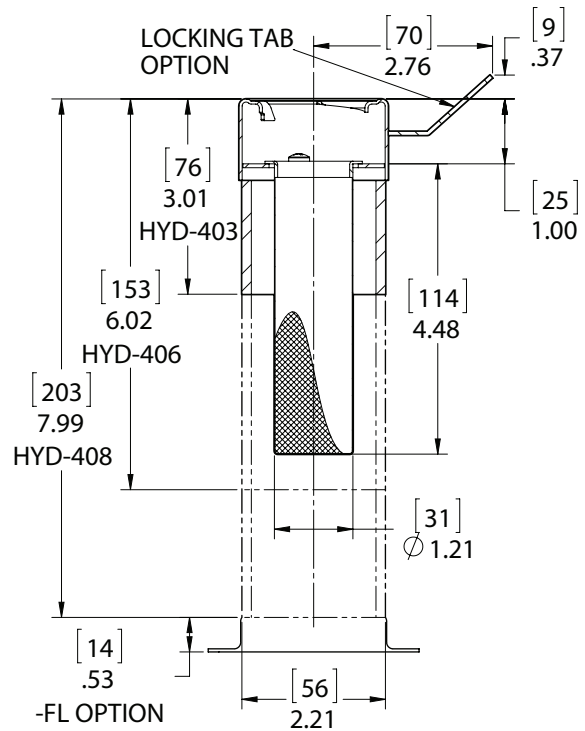
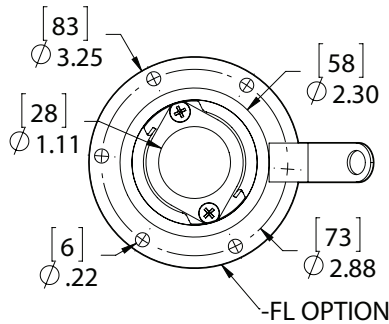
**HYD-406**  
(Neck Only / Caps Ordered Separately)



**LC-HYD-406**  
(Neck Only / Caps Ordered Separately)



**HYD-408-FL**



## Neck Ordering Code

LC — ALUM — HYD — 406 — 4.5

Lock		Optional	Material		Series	Neck Length		Options	
Omit		No Tab	Omit	Steel	HYD	1.3	1.25"	SR	Screen Retainer
*LC		**Lock Tab	Alum	Aluminum		403	3"	4.5	Installed Screen
						406	6"	52	Angle Of Cut
						408	8"	FL	Flange
						4**	Specify		

\*Locking Tab for XL series caps only.  
\*\*Consult LENZ for availability.

" Our customers have suggested that we offer necks, caps, and screens separately because of the need to weld and paint some items. If you want to order a completely assembly consult the factory for part numbers. "

Stainless Steel, The neck is 321 deep drawing 2b or 2d per mll-S-6721

The tube is 302/304 Stainless per ASTM-A269/249

Aluminum neck is 3003-0 Tempered



## Hydraulic Weld Risers

Lenz weld risers are drawn of heavy gauge steel with optional lock tab, and caps are available with lock, non-vent and vented versions

### HYD Series

#### Specifications

- SAE J 829 weld on neck
- 16 gauge (.060) steel not plated 2.28 diameter
- .50", .88", 1.25", 2.7" standard straight cut lengths

#### Options

- The stainless steel neck is 321 deep drawn 2B or 2D per MIL-S-6721 (25 pc minimum) 1.25" high
- The aluminum neck is 3003-0 Tempered (25 pc. minimum) 1.25" high
- Lock tab available
- Weld bead available 1.25" high
- Threaded 2.312-18 UNF thread 1.25" high



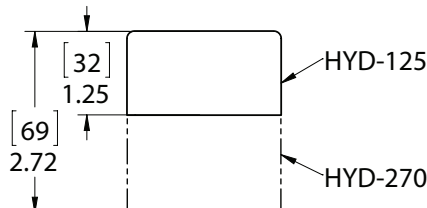
HYD-125  
BEAD



HYD-125



HYD-125-Alum



HYD-270

## Weld Riser Ordering Code

HYD - 125 - \*

## Screen Ordering Code

HYD - 4.5

Series	Length
HYD	4.5"



HYD-4.5

#### Specs

- 40 mesh 304SS screen, steel zinc plated flange
- 4.5" overall length
- 1.25" diameter
- 2 bolt mounting to screen retainer
- (2) 6-32 x 3/8" P.H.M.S. included with screen

Series
HYD

Neck	Height
50	.50"
88	.88"
125	1.20"
270	2.70"

Material		Models Available
Omit	Steel	50, 88, 125, 270
ALUM	Alumimum	125
SS	Stainless	125, 270
BEAD	Alumimum Weld Bead	125



ex. HYD-403-4.5  
(Neck Only / Caps Ordered Separately)  
Shown with 5NV Cap



ex. HYD-403-4.5  
(Neck Only / Caps Ordered Separately)  
Shown with BPC-40XL Cap

## CAP + Neck Ordering Code

LC - ALUM - HYD - 406 - 4.5 - AS - 57-XL-40 - P3 - DIP

Lock	Optional
Omit	No Tab
*LC	Lock Tab

Material	
Omit	Steel
Alum	Aluminum

Series
HYD

Neck Length	
1.3	1.25"
403	3"
406	6"
408	8"
4**	Specify

Options	
Sr	Screen Retainer
4.5	Screen Installed
52	Angle of Cut
Fl	Flange
LCH	Less Chain

Choose the desired style filler breather cap

57-XL Cap ordering code, see page 3b
FCS 557 Cap ordering code, see page 6b
FCS 537 Cap ordering code, see page 5b
NY-B Cap ordering code, see page 7b
LGB Cap ordering code, see page 8b

\*Locking Tab for XL series caps only.

Stainless Steel, The neck is 321 deep drawing 2b or 2d per mll-S-6721

The tube is 302/304 Stainless per ASTM-A269/249

Aluminum neck is 3003-0 Tempered

See Technical Bulletin TB.TA03.708, TB.TA .708 and TB.TA .708 for further information at (Technical Data - www.lenzinc.com).