



LFTB In-Tank Filter/ Breather

LFTB, LFTBA 750, 1000, 1250

Specifications

- Working pressure 100 PSI (7 Bar)
- Operating temperatures (-22°F to +212°F) (-32°C to +100°C)
- Flows to 40 GPM
- Bypass 25 PSID
- Compatible with mineral oils HH, HL, HM, HR, HV, HG, according to ISO 6743/4
- Aluminum casting with nylon bowl
- Nylon thread on cover
- 40 micron breather standard
- Buna tank gasket

Options

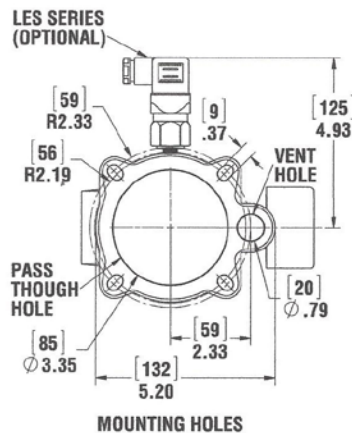
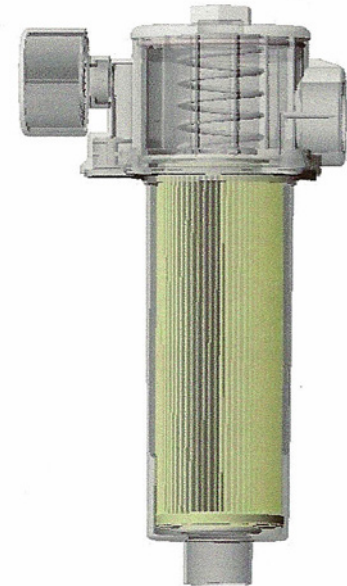
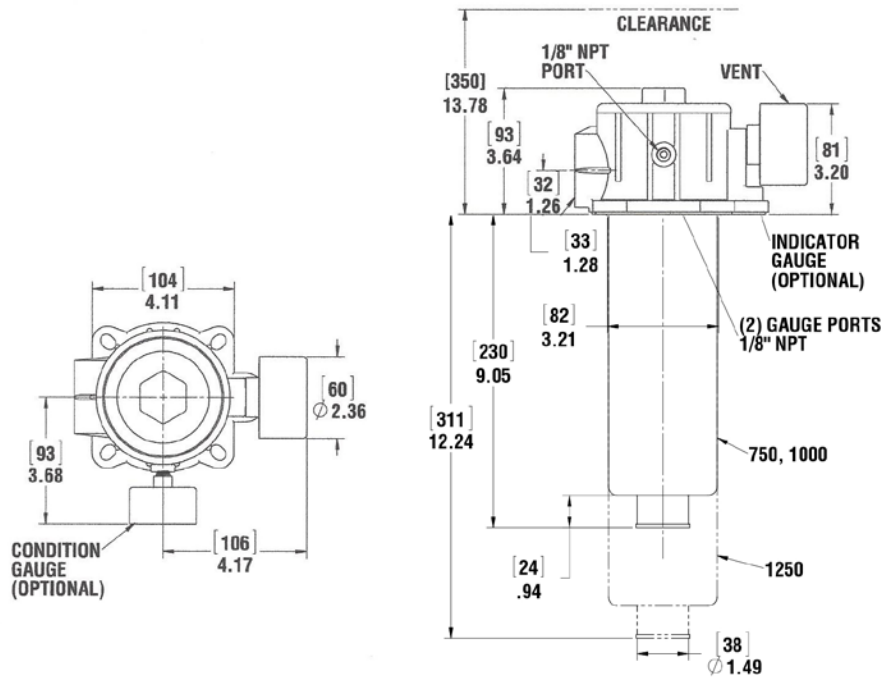
- NPT or SAE ports
- 10, 25 micron cellulose, synthetic elements
- Nylon thread on cover
- Visual or electrical indicators

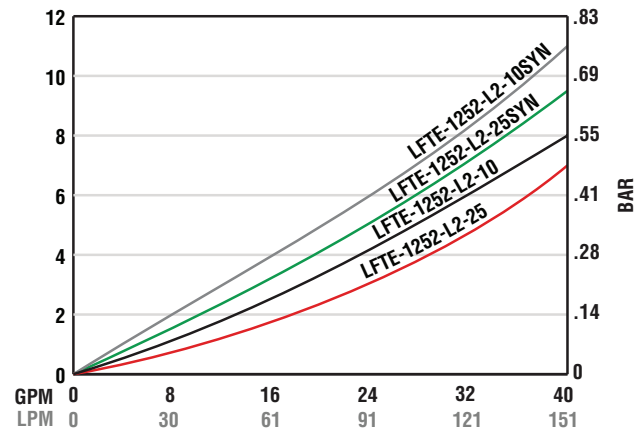
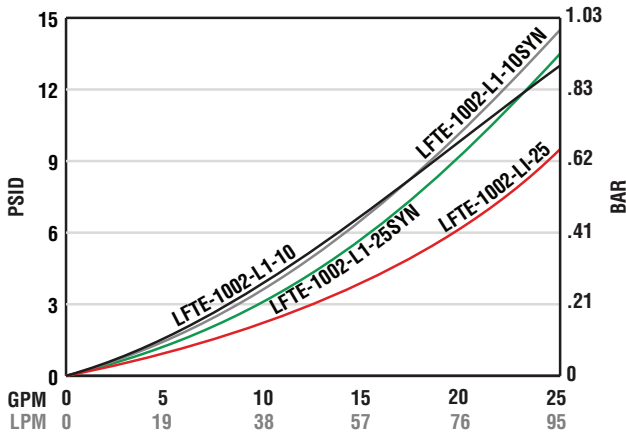


LFTB



LFTB





Temperature 100°F Viscosity 150 SUS
Average pressure drop through clean assembly

Ordering Code

LFTB — 750 — 10 — L1 — P — 10 — T

Series	Port Size	Element		Bowl Length	Bypass	Breather	Indicator Ports	
LFTB	750	10	10 Micron Cellulose	L1	P 25 PSID	10	(T)	1/8" NPT
LFTBA	1000	25	25 Micron Cellulose	L2		40		Return
	1250	10Syn	10 Micron Synthetic					
		25Syn	25 Micron Synthetic					

For indicator gauge specifications and ordering information see pages 38a-39a

**Indicators ordered and shipped separately*



Replacement Elements

Model Number	Media	in	cm	B-20/75/200	Dirt Holding Capacity
LFTE-1002-L1-10	10 Micron Cellulose	511	3300	6μ/8μ/13μ	15
LFTE-1002-L1-25	25 Micron Cellulose	511	3300	25μ/35μ/43μ	20
LFTE-1002-L1-10SYN	10 Micron Synthetic	372	2400	3μ/5.5μ/12μ	22
LFTE-1002-L1-25SYN	25 Micron Synthetic	372	2400	7μ/16μ/23μ	26
LFTE-1252-L2-10	10 Micron Cellulose	698	4500	6μ/8μ/13μ	21
LFTE-1252-L2-25	25 Micron Cellulose	698	4500	25μ/35μ/43μ	28
LFTE-1252-L2-10SYN	10 Micron Synthetic	504	3250	3μ/5.5μ/12μ	30
LFTE-1252-L2-25SYN	25 Micron Synthetic	504	3250	7μ/16μ/23μ	35

Beta Rating of 2 = 50% Efficiency
Beta Rating of 20 = 95% Efficiency
Beta Rating of 75 = 98.7% Efficiency
Note: 45 PSI Pressure Drop Maximum



General Filter Specifications

Bypasses

Differential opening set value + - 10%

Medias

Cellulose	Resin impregnated paper
Synthetic	Inorganic micro fiber
Wire Mesh	140 micron, 100 mesh stainless Steel
Water Removal	10 micron resin impregnated paper

Compatibility of Fluids with Filter Heads & Bowls Per ISO 6743/4

Mineral oils (types HH, HL, HM, HR, HV)
Water based emulsions (types HFAE, HFAS)
Synthetic fluids (types HS, HFDR, HFDS, HFFU)
Water glycol (types HFC)



LIT-1252-Bypass



LIT-1252-10P



CP-752-10

Compatibility of Fluids with Filter Elements Per ISO 2943

Mineral oils (types HH, HL, HM, HR, HV, HG) ISO 6743/4
Synthetic fluids (types A & M series only)
Water based emulsions consult Lenz for further information

Compatibility of Fluids with Seals Per ISO 6743/4

Nitrile (Buna N)

Mineral Oils (HH, HL, HM, HR, HV, HG)
Water emulsion (HFAE, HFAS)
Water glycol (HFC)

Viton seals

Synthetic fluids (types HS, HFDR, HFDS, HFDU)

Indicator Options

Visual Suction & return visual gauges
Electrical Suction & return electrical switches
Differential Return indicators

Mineral Oil Types

HH Non inhibited refined mineral oils
HL Refined mineral oils with anti-oxidation and anti-rust properties
HM HL fluids with improved anti wear
HR HL oils with VI improvers
HV Lubricants with high viscosity
HG HM oils with anti-stick slip properties

Water Based Emulsion Types

HFAE Oil water emulsions or aqueous fluids which are further with additional letters
HFAS Solutions of chemicals containing minimum 80% of water
HFC Aqueous solutions with viscosity-increasing additives and minimum 35% mass water

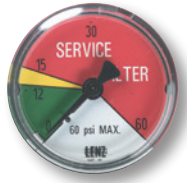
Synthetic Fluid Types

HFDU Fire resistant fluids of other compositions
HFDS HFD based upon phosphoric acid ester
HS Synthetic fluids with no specific fire resistant properties
HFDR HFD based on halogen-containing compounds





2" Diameter Filter Indicating Gauges



MC-12
Return Line Indicating Gauge
for **15 PSI** Filter Applications
2" Multi color
0-12 PSI Green
12-15 PSI Yellow
15-60 PSI Red (Service Filter)
(To be used with "T" Indicator Port Location)



MC-20
Return Line Indicating Gauge
for **25 PSI** Filter Applications
2" Multi color
0-20 PSI Green
21-24 PSI Yellow
25-60 PSI Red (Service Filter)
(To be used with "T" Indicator Port Location)



CP-2
Compound Indicating Gauge
(Suction or Return Line)
10" to 30" Vacuum is a Red Danger Area.
0-60 PSI
A Red "Change Filter" Sticker for the Pressure side is included with each gauge for application after the pressure factor is determined.
(To be used with "T" or "S" Indicator Port Location)



GLY-MC-20
Glycerin Filled
Return Line Indicating Gauge
for **25 PSI** Filter Applications
2" Multi color
0-20 PSI Green
21-24 PSI Yellow
25-60 PSI Red (Service Filter)
(To be used with "T" Indicator Port Location)



135080
Suction Line Indicating Gauge for
5 PSI vacuum filter application
2" Multi color
0-9" HG Green
9-11" HG Yellow
11-30" HG Red (Service Filter)
(To be used with "S" Indicator Port Location)

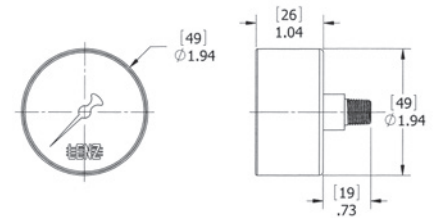


VAC-3-20
Suction Line Indicating Gauge
for **3 PSI** vacuum filter applications
2" Multi color
0-3" HG Green
4-6" HG Yellow
6-30" HG Red (Service Filter)
(To be used with "S" Indicator Port Location)

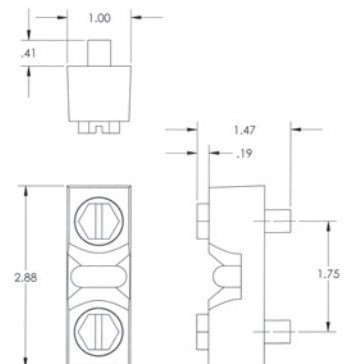


Differential Indicator DP-75
Simple differential sliding indicator which changes from green to red at 7 PSID.
0 - 7 PSID. Green Clean
7 - 10 PSID. Red Service Filter
CP Series (500, 750, 1010, 1280, 1580)

**Indicators ordered and shipped separately*



DIAL INDICATOR



DP-75



Electrical Filter Indicators

Field Adjustable

Specifications:

- 1/8 NPT connection
- 3 AMP 12/24 VDC, 125/250 VAC IP67
- +/- 2% repeatability of full set point range @ 70°F
- Operating temperature 40°F to +250°F (-40°C to 121°C)
- 1,000,000 cycles mechanical range
- Maximum pressure 500 (25 BAR) PSI
- Steel housing, zinc plated
- Buna N diaphragm
- SPDT snap action switch

Options:

- EPDM seals -10°F – 250°F (-23°C – 121°C)
- Viton seals 0 – 250°F (-18°C – 121°C)
- Flying leads

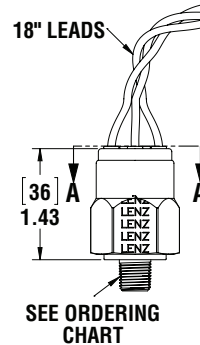
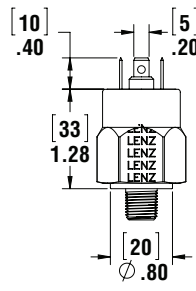
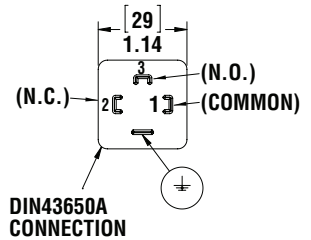
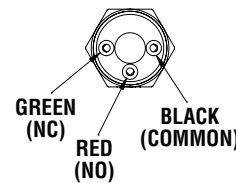
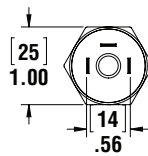


LES-FL

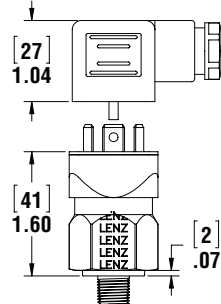


LES-HC

Model	Adjustment Range	Average Differential	Set Pressure
P1	3-20 PSI (.2-1.4 BAR)	2-5 PSI (.13-0.4 BAR)	15 PSI
P2	15-80 PSI (1.03-6 BAR)	4-7 PSI (.27-0.5 BAR)	22 PSI
V1	5-28 in Hg (160-948mb)	2-4 INHg (67-135mb)	5 Hg



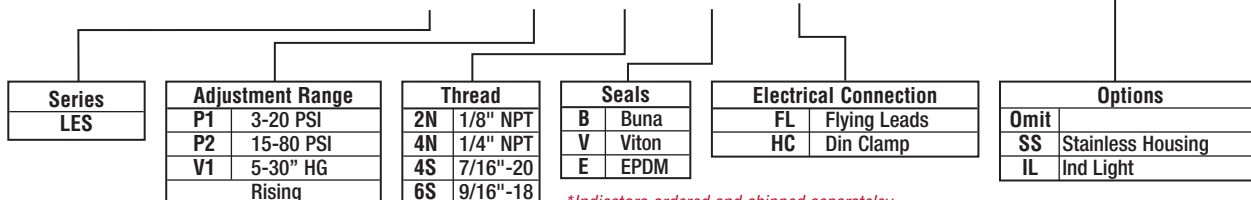
LES-FL



LES-HC

Switch Ordering Code

LES - P1 - 2N - B - HC -



*Indicators ordered and shipped separately

Switch can be used in AC or DC Service.
For other options consult factory.
Switch does not indicate differential pressure

See Technical Bulletin TB.FIL23.912, or further information at
(Technical Data – www.lenzinc.com)