



In-Tank Filters Disposable Filter Cartridge Type

Return Line Application
Model "LIT" Series LIT-1500, 2000

Specifications

- Working pressure 100 PSI (7 Bar)
- Operating temperatures -22°F to +212°F (-32°C to +100°C)
- Flows to 100 GPM (378 LPM) return
- 1 1/2", 2" dual ports aluminum casting
- Buna seals
- Compatible with mineral oils HH, HL, HM, HR, HV, HG, according to ISO 6743/4
- 25 PSID. bypass option for return
- Steel bowl
- Magnet on lid

Options

- NPT or SAE Ports
- 10, 25 micron cellulose, synthetic elements
- Water absorbing elements
- Visual or electric indicators
- 140 micron wire mesh elements
- Weld Riser available for LIT-1500, 2000 Series
(see Tech Bulletin: TB.FIL.06.708)
- Weld riser available for 1500, 2000 Series



LIT-1252-Bypass



LIT-1252-10P

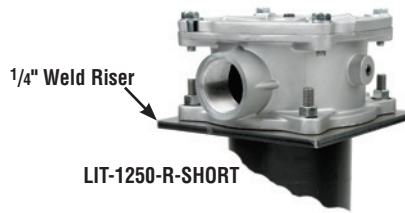


SIDE



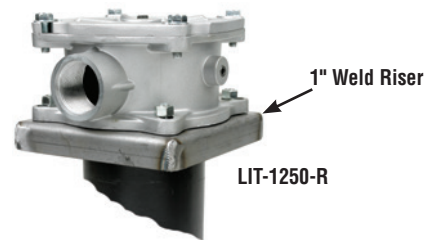
BOTTOM

DUAL LIT-1500
DUAL LIT-2000



1/4" Weld Riser

LIT-1250-R-SHORT



1" Weld Riser

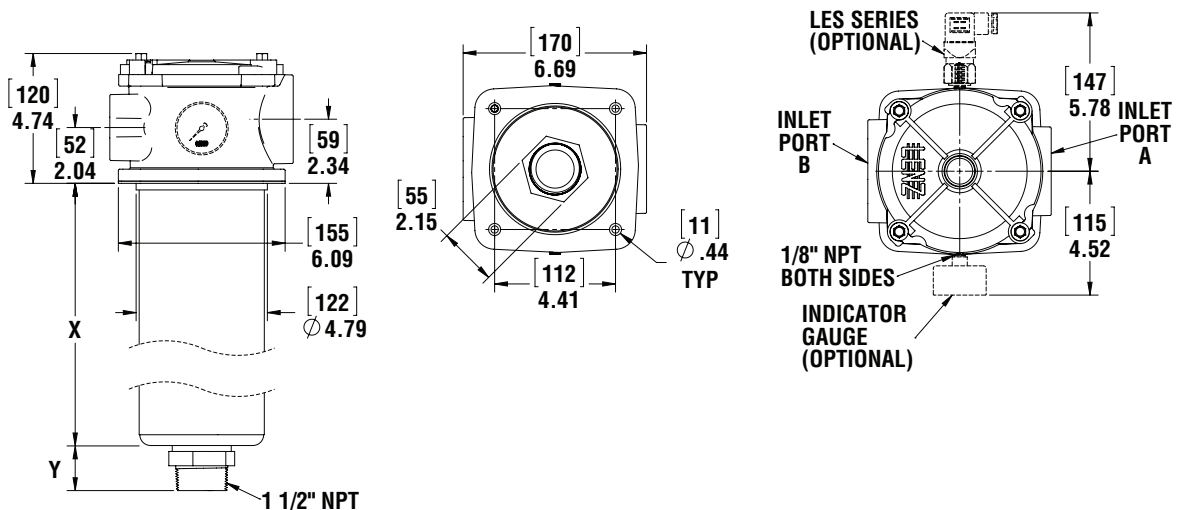
LIT-1250-R

Dual LIT Port Housing

	Inlet A	Inlet B
LIT-1500	1 1/2" NPT	1 1/2" Flange - 1 1/4" NPT
LITA-1500	1 7/8"-12 SAE	1 1/2" Flange - 1 5/8"-12 SAE

	Inlet A	Inlet B
LIT-2000	2" NPT	1 1/2" Flange - 1 1/4" NPT
LITA-2000	2 1/2"-12 SAE	1 1/2" Flange - 1 5/8"-12 SAE

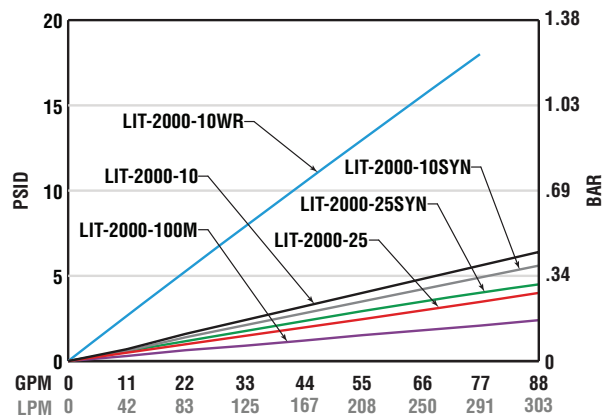
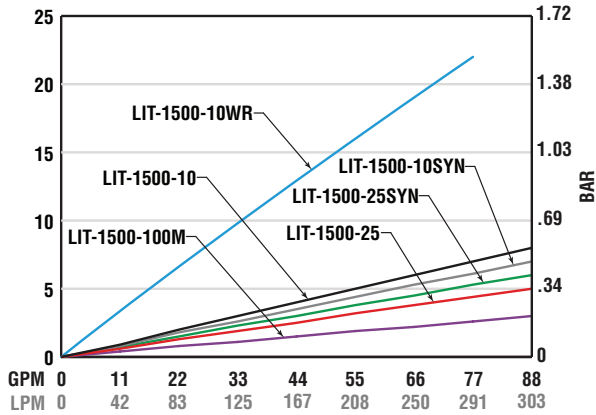
DUAL-LIT-1500, LIT-2000



Bowl Length Options

	Hose Bead	L1	L2	
X	8.9	8.9	17.4	in
	228	228	441	mm
Y	1.2	1.7	1.7	in
	30	42	42	mm

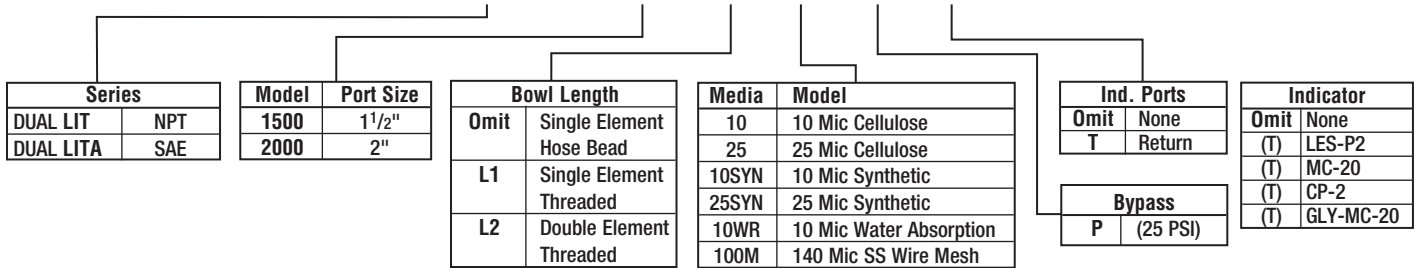
See Technical Bulletin TB.FIL9.708, TB.FIL11.708, TB.FIL20.708, for further information at (Technical Data – www.lenzinc.com)



Temperature 100°F Viscosity 150 SUS
Average pressure drop through clean assembly
(the above data is for a single element)

Assembly Ordering Code

DUAL LIT — 1500 — — 10 — P — T



For indicator gauge specifications and ordering information see pages 38a-39a

**Indicators ordered and shipped separately*

Replacement Elements

Model Number	Media	in	cm	B=2/20/75	Dirt Holding
LIT-1252-10P	10 Micron Cellulose	1120	7220	6μ/8μ/13μ	34
LIT-1252-25P	25 Micron Cellulose	1120	7220	24μ/35μ/43μ	44
LIT-1252-10SYN	10 Micron Synthetic	1120	7220	3μ/5.5μ/12μ	34
LIT-1252-10WR	10 Micron Water Removal	452	2916	10μ/18μ	14 Ounces
LIT-1252-100M	140 Micron Wire Mesh	310	1991	140μ	N/A

Beta Rating of 2 = 50% Efficiency
Beta Rating of 20 = 95% Efficiency
Beta Rating of 75 = 98.7% Efficiency
Note: 45 PSI Pressure Drop Maximum

LIT-1252 elements meet HF 4 specifications.
Element area & dirt holding shown are for one element.
Two replacement elements required.



General Filter Specifications

Bypasses

Differential opening set value + - 10%

Medias

Cellulose	Resin impregnated paper
Synthetic	Inorganic micro fiber
Wire Mesh	140 micron, 100 mesh stainless Steel
Water Removal	10 micron resin impregnated paper

Compatibility of Fluids with Filter Heads & Bowls Per ISO 6743/4

Mineral oils (types HH, HL, HM, HR, HV)
Water based emulsions (types HFAE, HFAS)
Synthetic fluids (types HS, HFDR, HFDS, HFFU)
Water glycol (types HFC)



LIT-1252-Bypass



LIT-1252-10P



CP-752-10

Compatibility of Fluids with Filter Elements Per ISO 2943

Mineral oils (types HH, HL, HM, HR, HV, HG) ISO 6743/4
Synthetic fluids (types A & M series only)
Water based emulsions consult Lenz for further information

Compatibility of Fluids with Seals Per ISO 6743/4

Nitrile (Buna N)

Mineral Oils (HH, HL, HM, HR, HV, HG)
Water emulsion (HFAE, HFAS)
Water glycol (HFC)

Viton seals

Synthetic fluids (types HS, HFDR, HFDS, HFDU)

Indicator Options

Visual Suction & return visual gauges
Electrical Suction & return electrical switches
Differential Return indicators

Mineral Oil Types

HH Non inhibited refined mineral oils
HL Refined mineral oils with anti-oxidation and anti-rust properties
HM HL fluids with improved anti wear
HR HL oils with VI improvers
HV Lubricants with high viscosity
HG HM oils with anti-stick slip properties

Water Based Emulsion Types

HFAE Oil water emulsions or aqueous fluids which are further with additional letters
HFAS Solutions of chemicals containing minimum 80% of water
HFC Aqueous solutions with viscosity-increasing additives and minimum 35% mass water

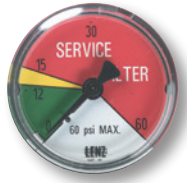
Synthetic Fluid Types

HFDU Fire resistant fluids of other compositions
HFDS HFD based upon phosphoric acid ester
HS Synthetic fluids with no specific fire resistant properties
HFDR HFD based on halogen-containing compounds





2" Diameter Filter Indicating Gauges



MC-12
Return Line Indicating Gauge
for **15 PSI** Filter Applications
2" Multi color
0-12 PSI Green
12-15 PSI Yellow
15-60 PSI Red (Service Filter)
(To be used with "T" Indicator Port Location)



MC-20
Return Line Indicating Gauge
for **25 PSI** Filter Applications
2" Multi color
0-20 PSI Green
21-24 PSI Yellow
25-60 PSI Red (Service Filter)
(To be used with "T" Indicator Port Location)



CP-2
Compound Indicating Gauge
(Suction or Return Line)
10" to 30" Vacuum is a Red Danger Area.
0-60 PSI
A Red "Change Filter" Sticker for the Pressure side is included with each gauge for application after the pressure factor is determined.
(To be used with "T" or "S" Indicator Port Location)



GLY-MC-20
Glycerin Filled
Return Line Indicating Gauge
for **25 PSI** Filter Applications
2" Multi color
0-20 PSI Green
21-24 PSI Yellow
25-60 PSI Red (Service Filter)
(To be used with "T" Indicator Port Location)



135080
Suction Line Indicating Gauge for
5 PSI vacuum filter application
2" Multi color
0-9" HG Green
9-11" HG Yellow
11-30" HG Red (Service Filter)
(To be used with "S" Indicator Port Location)

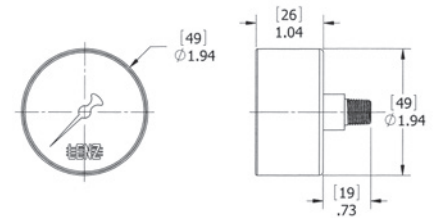


VAC-3-20
Suction Line Indicating Gauge
for **3 PSI** vacuum filter applications
2" Multi color
0-3" HG Green
4-6" HG Yellow
6-30" HG Red (Service Filter)
(To be used with "S" Indicator Port Location)

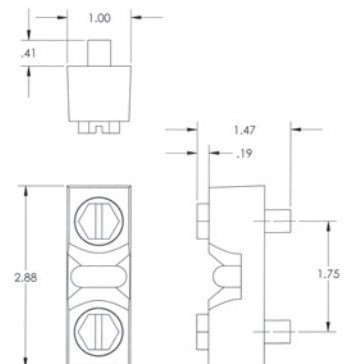


Differential Indicator DP-75
Simple differential sliding indicator which changes from green to red at 7 PSID.
0 - 7 PSID. Green Clean
7 - 10 PSID. Red Service Filter
CP Series (500, 750, 1010, 1280, 1580)

**Indicators ordered and shipped separately*



DIAL INDICATOR



DP-75



Electrical Filter Indicators

Field Adjustable

Specifications:

- 1/8 NPT connection
- 3 AMP 12/24 VDC, 125/250 VAC IP67
- +/- 2% repeatability of full set point range @ 70°F
- Operating temperature 40°F to +250°F (-40°C to 121°C)
- 1,000,000 cycles mechanical range
- Maximum pressure 500 (25 BAR) PSI
- Steel housing, zinc plated
- Buna N diaphragm
- SPDT snap action switch

Options:

- EPDM seals -10°F – 250°F (-23°C – 121°C)
- Viton seals 0 – 250°F (-18°C – 121°C)
- Flying leads

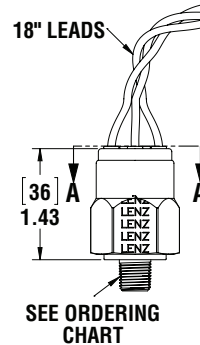
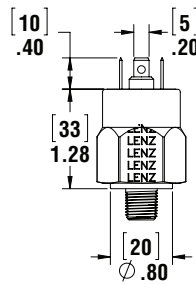
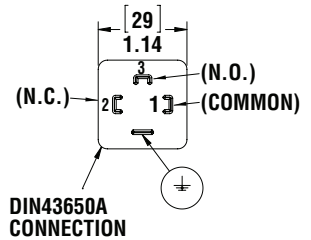
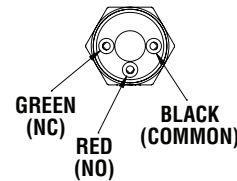
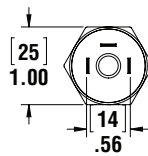


LES-FL

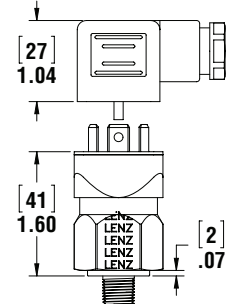


LES-HC

Model	Adjustment Range	Average Differential	Set Pressure
P1	3-20 PSI (.2-1.4 BAR)	2-5 PSI (.13-0.4 BAR)	15 PSI
P2	15-80 PSI (1.03-6 BAR)	4-7 PSI (.27-0.5 BAR)	22 PSI
V1	5-28 in Hg (160-948mb)	2-4 INHg (67-135mb)	5 Hg



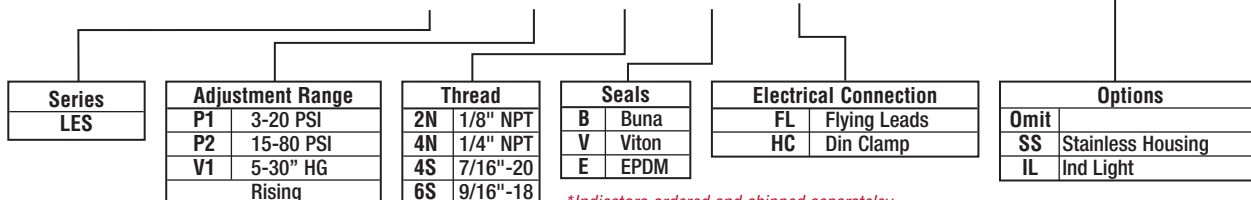
LES-FL



LES-HC

Switch Ordering Code

LES - P1 - 2N - B - HC -



*Indicators ordered and shipped separately

Switch can be used in AC or DC Service.
For other options consult factory.
Switch does not indicate differential pressure

See Technical Bulletin TB.FIL23.912, or further information at
(Technical Data – www.lenzinc.com)