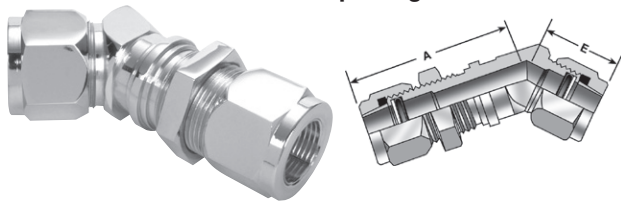


940
BULKHEAD 45° UNION ELBOW
 Tube Both Openings

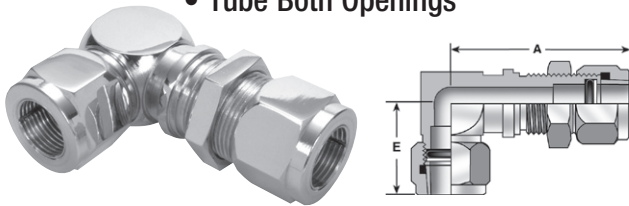


Max. Bulkhead Thickness 1/2"

940 • Bulkhead 45° Union Elbow
 Part Numbers Include body nuts, sleeves, "O-Rings" and Back-Up Washers.

| Part No. | Tube O.D. | Bulkhead Hole Dia. | Overall Length | E Tube Leg |
|----------|-----------|--------------------|----------------|------------|
| 940-4 | 1/4" | .53" | 2.13" | .91" |
| 940-5 | 5/16" | .59" | 2.16" | .88" |
| 940-6 | 3/8" | .66" | 2.28" | 1.00" |
| 940-8 | 1/2" | .91" | 2.59" | 1.22" |
| 940-10 | 5/8" | 1.03" | 2.84" | 1.44" |
| 940-12 | 3/4" | 1.16" | 3.09" | 1.59" |
| 940-16 | 1" | 1.53" | 3.28" | 1.81" |
| 940-20 | 1 1/4" | 1.78" | 3.72" | 2.22" |

950
BULKHEAD UNION ELBOW
 • Tube Both Openings

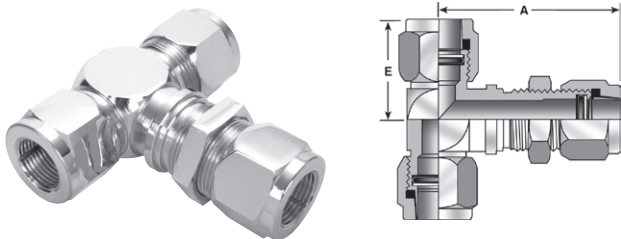


Max. Bulkhead Thickness 1/2"

950 • Bulkhead Union Elbow
 Part Numbers Include body nuts, sleeves, "O-Rings" and Back-Up Washers.

| Part no. | Tube O.D. | Bulkhead Hole Dia. | A Bulkhead Leg | E Tube Leg |
|----------|-----------|--------------------|----------------|------------|
| 950-4 | 1/4" | .53" | 2.16" | 1.00" |
| 950-5 | 5/16" | .59" | 2.22" | 1.03" |
| 950-6 | 3/8" | .66" | 2.41" | 1.13" |
| 950-8 | 1/2" | .91" | 2.75" | 1.47" |
| 950-10 | 5/8" | 1.03" | 3.09" | 1.66" |
| 950-12 | 3/4" | 1.16" | 3.34" | 1.84" |
| 950-14 | 7/8" | 1.28" | 3.44" | 1.94" |
| 950-16 | 1" | 1.53" | 3.75" | 2.22" |
| 950-20 | 1 1/4" | 1.78" | 4.19" | 2.59" |
| 950-24 | 1 1/2" | 2.03" | 4.47" | 2.91" |

960
BULKHEAD TEE
 Tube End All Openings

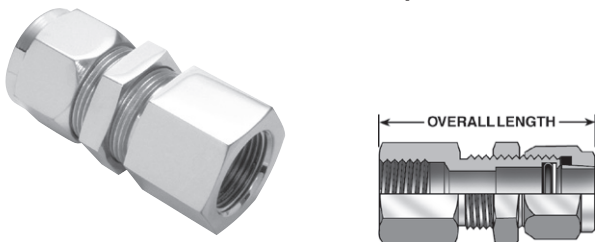


Maximum Bulkhead Thickness 1/2"

960 • Bulkhead Tee
 Part Numbers Include body nuts, sleeves, "O-Rings" and Back-Up Washers.

| Part No. | Tube O.D. | Bulkhead Hole Dia. | A Bulkhead Leg | E Tube Leg |
|----------|-----------|--------------------|----------------|------------|
| 960-4 | 1/4" | .53" | 2.16" | 1.00" |
| 960-5 | 5/16" | .59" | 2.22" | 1.03" |
| 960-6 | 3/8" | .66" | 2.41" | 1.13" |
| 960-8 | 1/2" | .91" | 2.75" | 1.47" |
| 960-10 | 5/8" | 1.03" | 3.09" | 1.66" |
| 960-12 | 3/4" | 1.16" | 3.34" | 1.84" |
| 960-16 | 1" | 1.53" | 3.75" | 2.22" |
| 960-20 | 1 1/4" | 1.78" | 4.19" | 2.59" |

980
FEMALE BULKHEAD
 Tube End to Female Pipe End



Maximum Bulkhead Thickness 1/2"

980 • Female Bulkhead Connector
 Part Numbers Include body nuts, sleeves, "O-Rings" and Back-Up Washers.

| Part no. | Tube O.D. | Bulkhead Hole Dia. | Female Pipe Thread | Overall Length |
|-----------|-----------|--------------------|--------------------|----------------|
| 980-4-2 | 1/4" | .53" | 1/8" | 2.09" |
| 980-4-4 | 1/4" | .53" | 1/4" | 2.25" |
| 980-5-2 | 5/16" | .59" | 1/8" | 2.09" |
| 980-6-4 | 3/8" | .66" | 1/4" | 2.38" |
| 980-6-6 | 3/8" | .66" | 3/8" | 2.38" |
| 980-8-6 | 1/2" | .91" | 3/8" | 2.69" |
| 980-8-8 | 1/2" | .91" | 1/2" | 2.88" |
| 980-10-8 | 5/8" | 1.03" | 1/2" | 3.03" |
| 980-12-12 | 3/4" | 1.16" | 3/4" | 3.28" |
| 980-14-12 | 7/8" | 1.28" | 3/4" | 3.31" |
| 980-16-16 | 1" | 1.53" | 1" | 3.69" |
| 980-20-20 | 1 1/4" | 1.78" | 1 1/4" | 3.94" |
| 980-24-24 | 1 1/2" | 2.03" | 1 1/2" | 4.06" |
| 980-32-32 | 2" | 2.66" | 2" | 4.53" |

Stainless Steel Tubing
 Lenz O-ring Seal tube fitting performs equally well on stainless steel tubing as with carbon steel tubing, but requires the use of stainless steel sleeves (#165-xxSS) and stainless steel buffer washers (#195-xx-SS), even when used with steel fittings. Example, when ordering: 100-12-12 with SS Sleeves.
 When Ordering Lenz Fittings in all Stainless Steel Add SS To The Part Number. Example: 100-12-12-SS