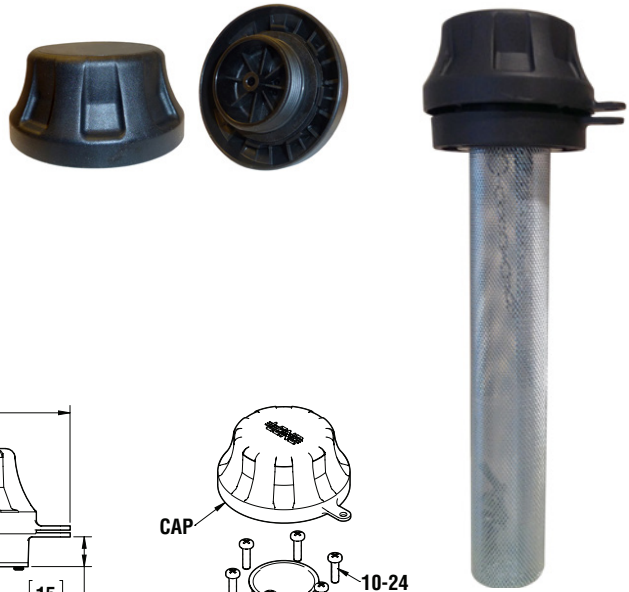




Nylon Air Breather

NY-9-M52, NY-9-M52-F



Specifications

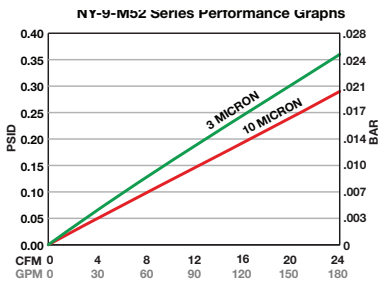
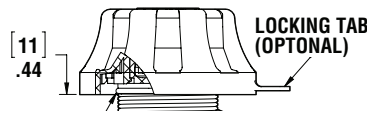
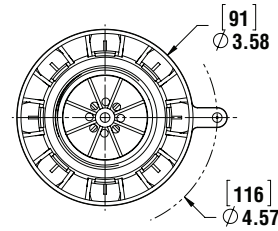
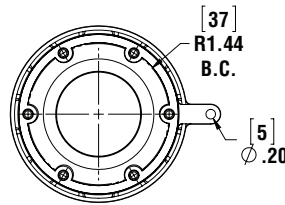
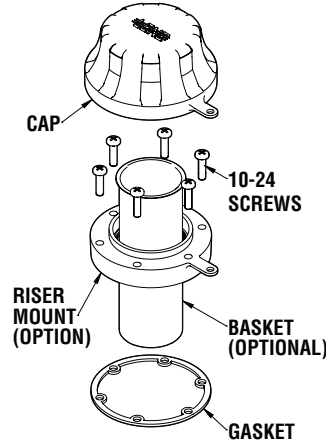
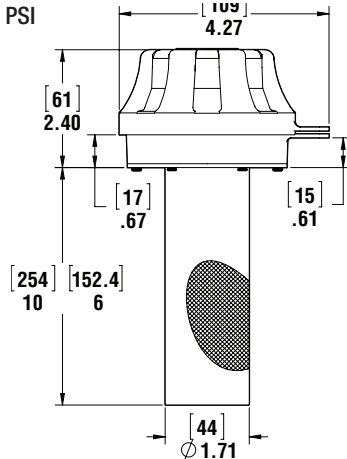
- Glass Filled Nylon cap
- Operating temperature -22°F to +212°F (-30°C TO +100°C)
- 3 or 10 micron cellulose elements
- Non vent cap option
- M52 x 2 Thread standard
- Maximum flow rates 33 CFM, 250 GPM @.58 PSI
- Buna seals

Options Available

- Nylon tank flange available
- 5 PSI double valve
- Steel zinc phosphate dipstick
- Tether chain (hook on screen)
- Non vent breather
- 30 mesh fill screens
- Flange mount lock tabs

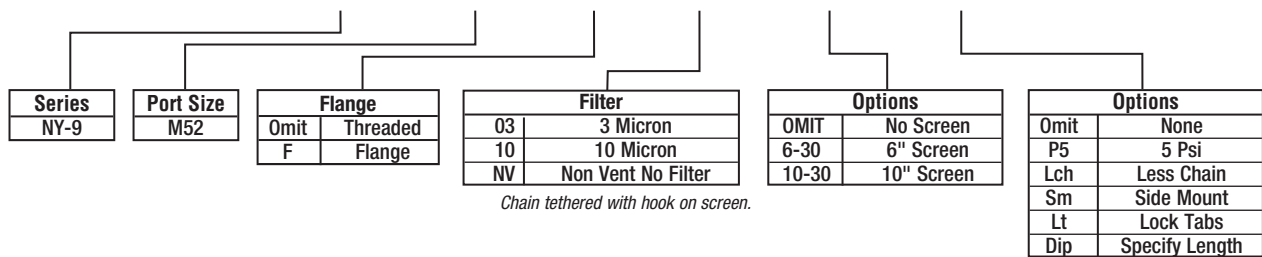
Tank Flange Options

- PA 6 Nylon tank flange available
- 5 PSI double valve
- Steel zinc phosphate dipstick
- 10-32 x 3/4 screws with tank flange
- Buna flange gaskets
- Tether chain
- Non vent breather
- 30 mesh 6", 10" fill screens



Assembly Ordering Code

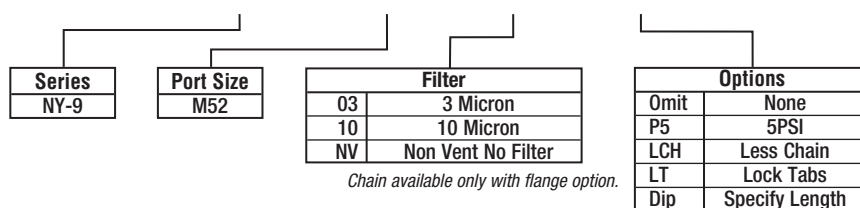
NY-9 — M52 — F — 10 — 6-30 — P5



See dipstick reference chart page 73b

Cap Ordering Code

NY-9 — M52 — 10 — LCH



See Technical Bulletin TB.TA07.708, TB.TA10.708 and TB.TA11.708 for further information at (Technical Data - www.lenzinc.com).



Nylon Air Breather

NY-9-M52, NY-9-M52-F



Specifications

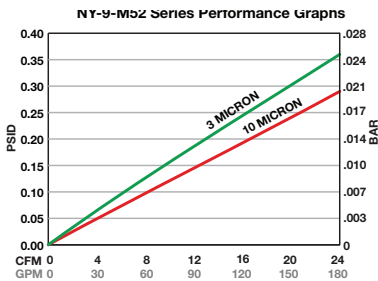
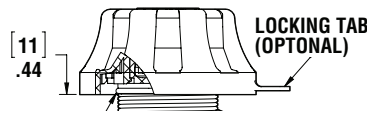
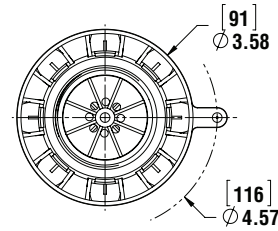
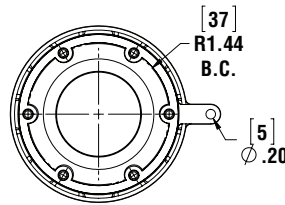
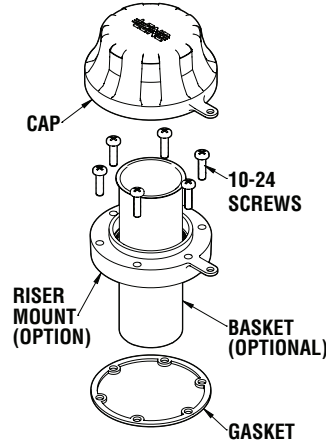
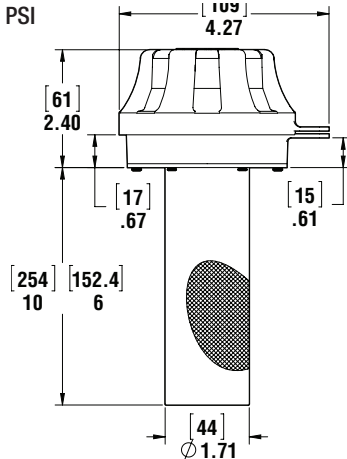
- Glass Filled Nylon cap
- Operating temperature -22°F to +212°F (-30°C TO +100°C)
- 3 or 10 micron cellulose elements
- Non vent cap option
- M52 x 2 Thread standard
- Maximum flow rates 33 CFM, 250 GPM @.58 PSI
- Buna seals

Options Available

- Nylon tank flange available
- 5 PSI double valve
- Steel zinc phosphate dipstick
- Tether chain (hook on screen)
- Non vent breather
- 30 mesh fill screens
- Flange mount lock tabs

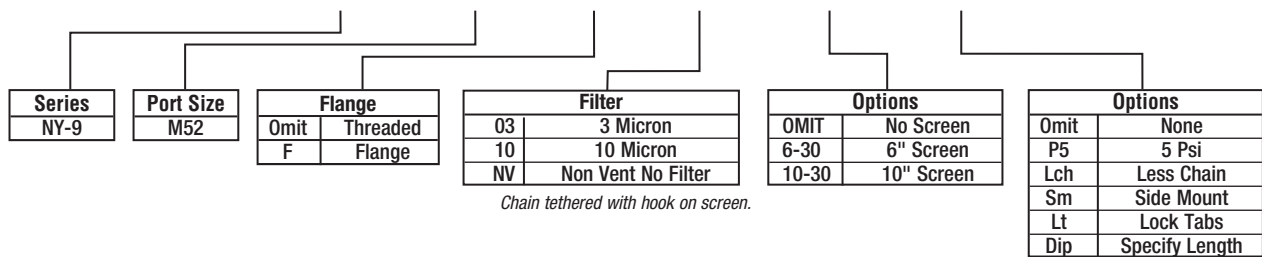
Tank Flange Options

- PA 6 Nylon tank flange available
- 5 PSI double valve
- Steel zinc phosphate dipstick
- 10-32 x 3/4 screws with tank flange
- Buna flange gaskets
- Tether chain
- Non vent breather
- 30 mesh 6", 10" fill screens



Assembly Ordering Code

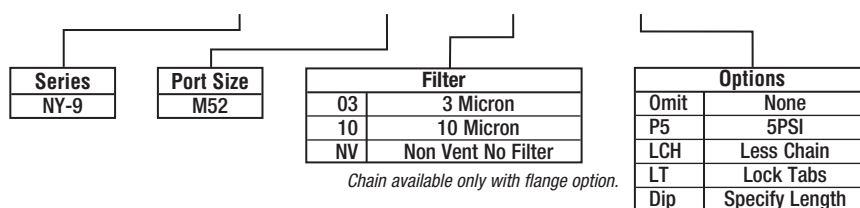
NY-9 - M52 - F - 10 - 6-30 - P5



See dipstick reference chart page 73b

Cap Ordering Code

NY-9 - M52 - 10 - LCH



See Technical Bulletin TB.TA07.708, TB.TA10.708 and TB.TA11.708 for further information at (Technical Data - www.lenzinc.com).