



Scan Code
to Learn More

SM-2011

TYPE SM SERIES SIDE MOUNTING

SM Side Mount Assembly

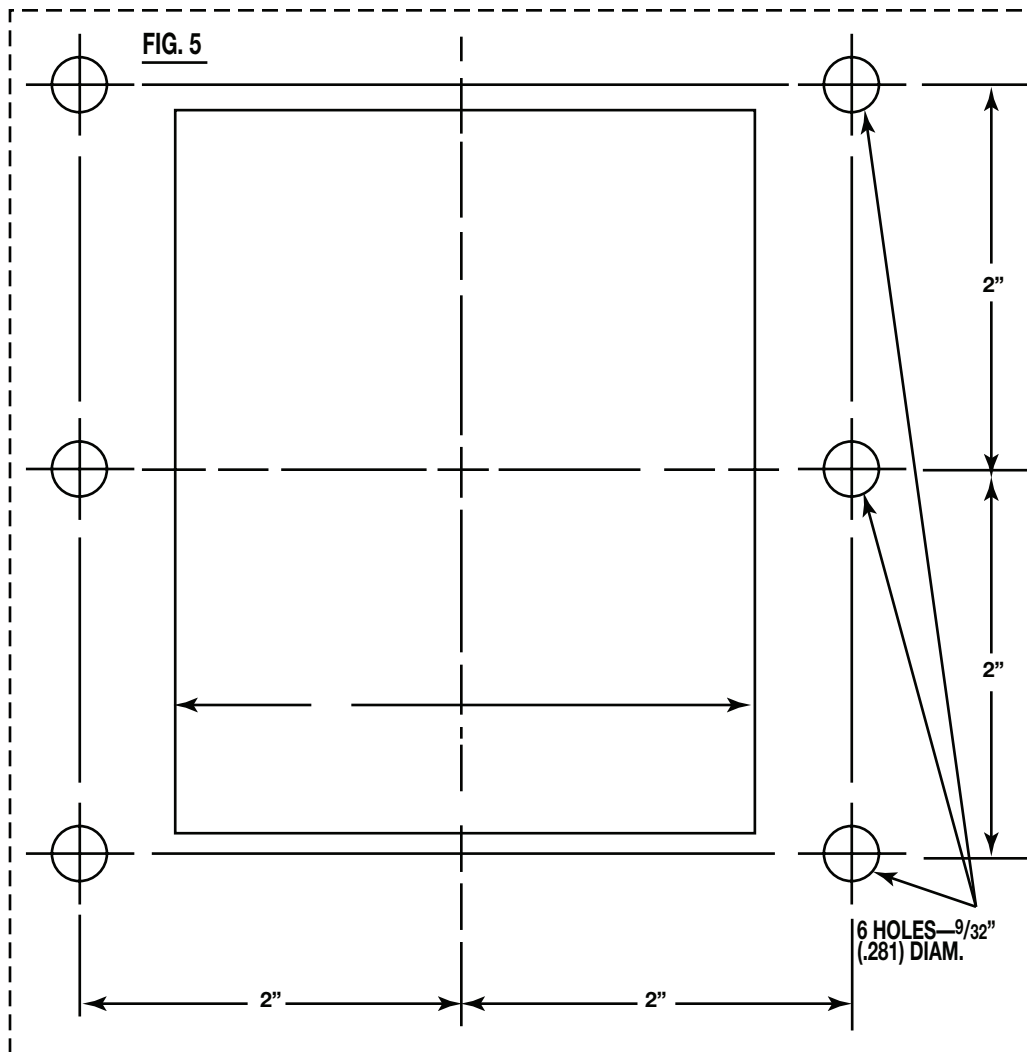
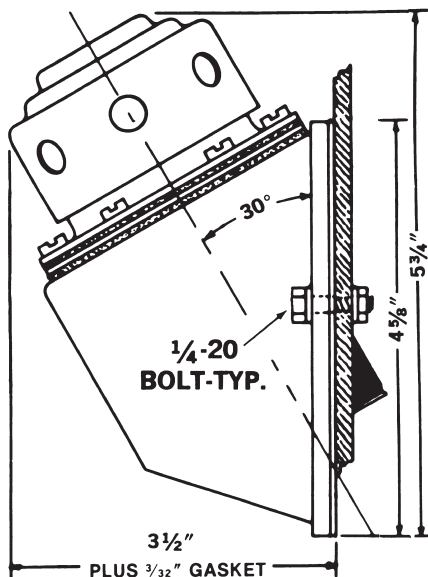
SM filler breather cap assemblies are designed for attaching to the side or end of reservoirs. The unit consists of our standard FCS or XL series filler breathers mounted on special 30 degree angle housing and is furnished complete with flange gasket, bolts, seals, plate washers, and hex nuts, ready for installation.

The mounting surface should be fabricated as detailed in (figure 5) with a 3" x 3.5" opening and six (6) 9/32" (.281) diameter bolt holes. For ease of layout if you don't have computer aided design you could use the template below to fabricate the mounting layout for the side mount bracket.

Burrs should be removed from around the 3" x 3.5" "opening and bolt holes, to provide a good sealing surface for the housing flange gasket. The metal surface should be flat in the mounting area, within the limits of 1/16" thick flange gasket furnished. Parts should be installed as shown in (figure 4). CARE SHOULD BE TAKEN TO MAKE SURE THE PLASTIC SEALS ARE LOCATED UNDER EACH OF THE HEX HEAD BOLT HEADS, with the plate washers used inside of the reservoir with the hex nuts. This is to provide for sealing against any possible seepage following along the crest of the bolt heads.



SM assemblies are available with several caps see catalog Page 4b





Scan Code
to Learn More

SM-2011

More Options Available For Side Mounts



Black Powder Coated

Weather-proof application.

Example when ordering:
BPC-57XL-40



Locking cap-3/8" Hole Accepts Padlock

Prevents tampering of equipment.
See page 1-2b.

Example when ordering:
LC-57XL-40



Pressurized Breather

5 or 10 P.S.I. Relief Valve
See page 2b.

Example when ordering:
57XL-40P-5



3" High Neck Flange

Prevents oil from entering
into cap, mobile application.
Also, allows tank-top dirt from
plugging up the breather/air filter.
See page 1-4b.

Example when ordering:
57XL-40-3HN



Anti-Splash Breather Cap

Prevents oil from entering into
cap & element. For mobile
applications.

Example when ordering:
AS-57XL-40



Dipsticks

Attaches to Cap.
Can be Marked to order:
Full, Add, Low, etc.

Example when ordering:
57XL-40w / 3" DIP