



Fluid Power Specialist

Lenz “LW-BA” Weld Adapters

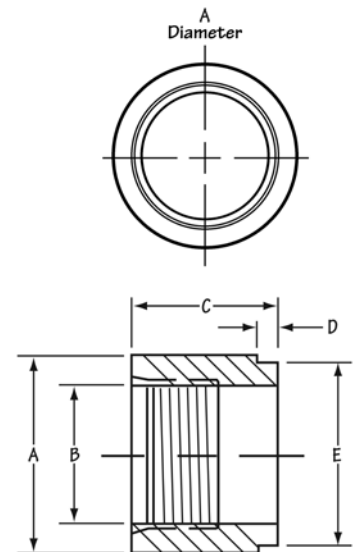
Lenz “LW-BA” Weld Adapters are designed and machined with a pilot to accurately position the adapter to the hole opening for welding flush to the outside of the tank. The Weld Adapter is a female S.A.E. O-Ring connector for Lenz S.A.E. male straight thread fittings or any other Lenz hydraulic component with a male S.A.E. straight thread, making for a leak-free installation.

Lenz “LW-BA” Weld Adapters are precision machined from steel (stainless Steel Optional), unplated, but oiled to prevent corrosion. Available in nine sizes from stock.

LW-BA Weld Adapters FEMALE S.A.E. “O-RING” WELD Adapter

LENZ “LW-BA” Weld Adapters are a female S.A.E. O-ring connector for Lenz S.A.E. male straight thread fittings or any other Lenz hydraulic component with a male S.A.E. straight thread, making for a leak-free installation.

MODEL NUMBER	STAINLESS STEEL	FEMALE S.A.E.	A	B	C	D	E
LWBA-6	LWBA-6-SS	9/16"-18	1.00	0.50	1.00	0.25	0.88
LWBA-8	LWBA-8-SS	3/4"-16	1.25	0.69	1.06	0.25	1.13
LWBA-10	LWBA-10-SS	7/8"-14	1.38	0.81	1.06	0.25	1.25
LWBA-12	LWBA-12-SS	1 1/16"-12	1.50	0.98	1.28	0.25	1.38
LWBA-14	LWBA-14-SS	1 3/16"-12	1.63	1.10	1.25	0.25	1.50
LWBA-16	LWBA-16-SS	1 5/16"-12	1.75	1.23	1.28	0.25	1.63
LWBA-20	LWBA-20-SS	1 5/8"-12	2.25	1.54	1.28	0.25	2.13
LWBA-24	LWBA-24-SS	1 7/8"-12	2.75	1.79	1.28	0.25	2.50
LWBA-32	LWBA-32-SS	2 1/2"-12	3.25	2.41	1.50	0.25	3.00



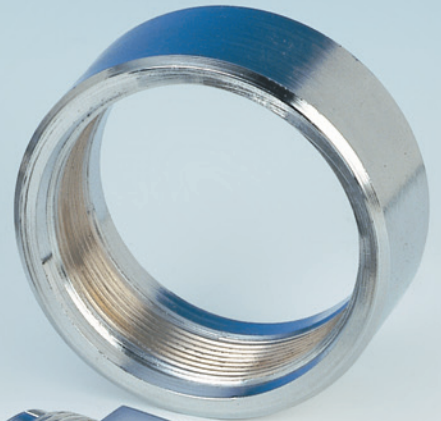
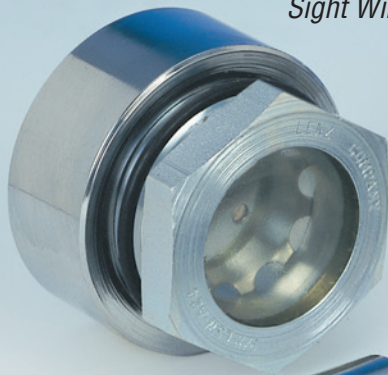
“We have redesigned our Web-Site to better serve our customers and make ordering the products you need everyday more convenient.”

**Visit us online @www.lenzinc.com
today and see just how easy
ordering your products can be.**

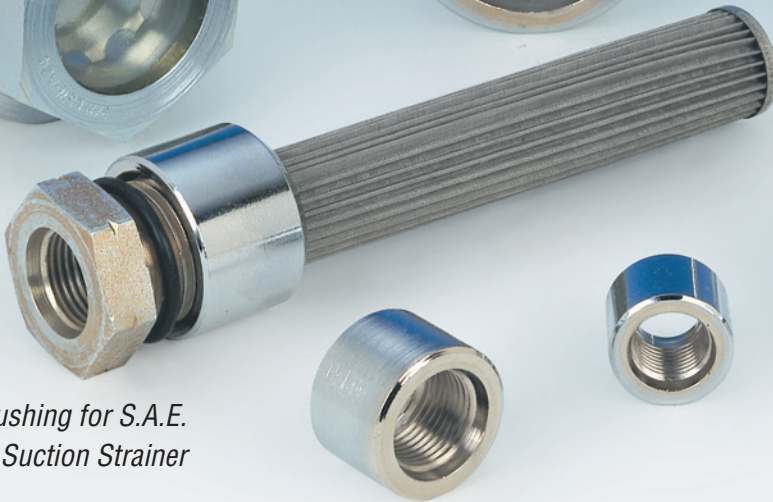


“LW-BA” WELD ADAPTERS

*Weld Bushing for S.A.E.
Sight Window*



*Weld Bushing for S.A.E.
Suction Strainer*



“O-Ring”

*Weld Bushing for S.A.E.
Hydraulic Fitting*

