



Scan Code
to Learn More

1303-2011

SUPER FILL CAP ASSEMBLY



FCS-1303-70
FCS-1303-24

Lenz Super Fill Cap and strainer assembly speeds up the filling of large capacity tanks. A 24 or 70 mesh fill screen is used to strain the fluid through its 4.38" diameter opening ideal for use with cold viscous fluids. The cap is available in a vent or non vent option and is equipped with a tether chain retaining the cap to tank flange.

We also offer 3 tank flange mountings: (FIG 1) the standard is a .5" 6 bolt flange, (FIG 2) in a 1.5" high neck 6 bolt flange FCS-1303-150HN, and (FIG 3) in FCS-1303-150 a 1.5" high weld neck option. See installation drawings below for details on tank mounting information you require. All flange mount Super fill assemblies come with necessary mounting hardware, including tank gasket, and self tapping screws.

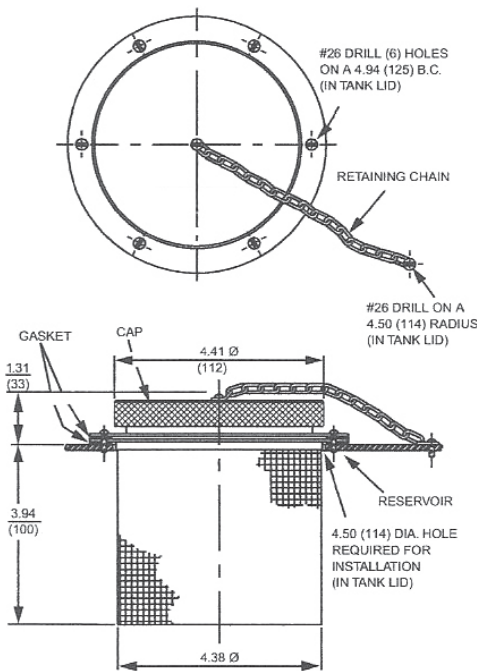


FIG 3
FCS-1303-150

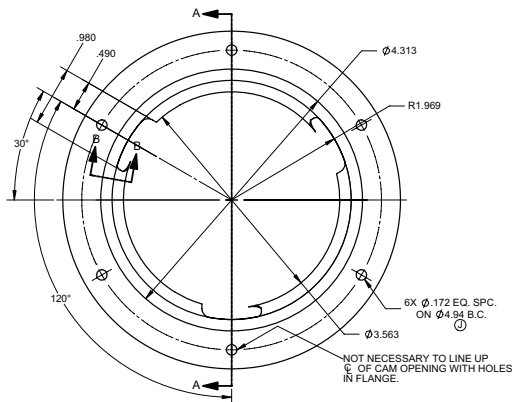
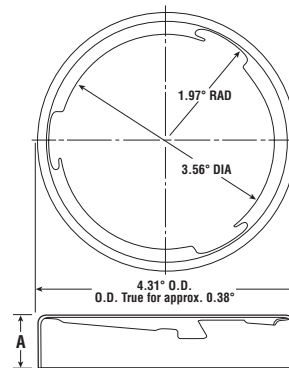


FIG 1
STANDARD 6 BOLT FLANGE

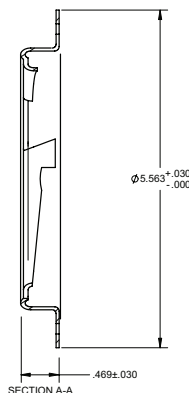
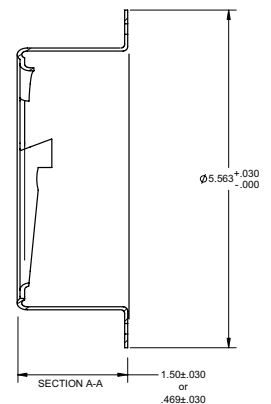


FIG 2
FCS-1303-150HN





Scan Code
to Learn More

1303-2011

SUPER FILLER – STRAINER MODEL FCS-1303 MOUNTING INSTRUCTIONS

The mounting surface should be fabricated as outlined in the drawing below, with a 4.5" diameter opening for the strainer screen and (7) .136 (#29 drill) holes for the 8-32 self tapping screws furnished with the unit.

If you have computer controlled laser cutting or punch machine control then you will want to load the layout below into your machine control program.

If you don't have computer aided design you use the drawing below which is full size as a template. Simply cut it from this sheet and tape on the reservoir top at the desired mounting location. Mark distinctly with a center punch, the center of the 4.5" diameter opening and the centers of each of the (7) .136 diameter self-tapping screw holes.

After removing the template, the 4.5" diameter opening can be made with a hole saw, using the center mark for the pilot drill location or the opening can be cut out with a torch. In drilling the holes for the self tapping screws, **CARE SHOULD BE TAKEN NOT TO DRILL OVER-SIZE** to insure sufficient stock for the screw threads.

Burrs should be removed from around the 4.5" diameter opening and the screw holes, to provide a good sealing surface for the flange gasket. Parts should be mounted with one gasket located between the strainer screen flange and the reservoir, and the other gasket between the screen and the filler neck flange. One self-tapping screw is used to attach the safety chain to the top of the reservoir.

